

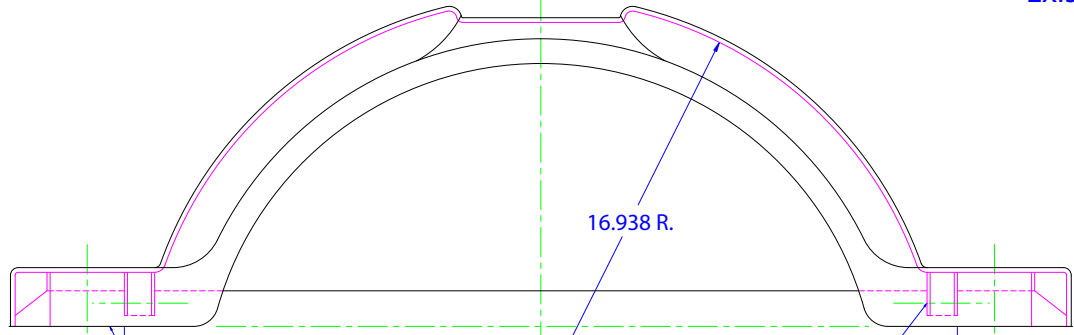
0.459

0.328 R.

11.375

New Rib

Existing Rib



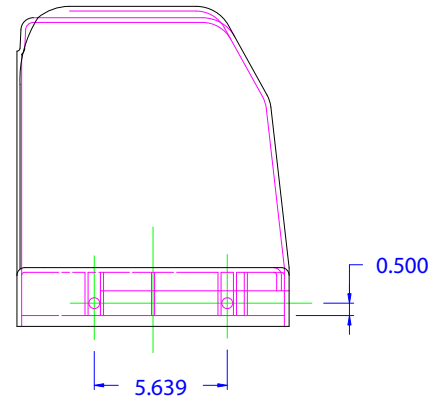
16.938 R.

11/32 Dia. Holes Thru Both Internal Ribs, (4)-Places

44.979

35.321

See Note 3.



0.500

5.639

Note:

1. Material - HDPE (14533) Pigmented Black (14227).
2. This Drawing Shows A Revision That Is Being Worked On Now, Final Dimensions May Vary.
3. Be Sure To Use An Insert After Molding Parts To Hold Steps Parallel.
4. Final Drawing Will Be Completed Later, Use This Drawing For Reference Only.

MARK	DATE	REVISION

TOLERANCES EXCEPT AS NOTED		 Tie Down Engineering 5901 Wheaton Drive Atlanta, Georgia 30336
DECIMAL (+/-) 0.032	TITLE 14-15" Plastic Fender, Black	
ANGULAR (+/-) 1	SCALE ACAD	DATE 12-8-97
DWG. NO. 44331		