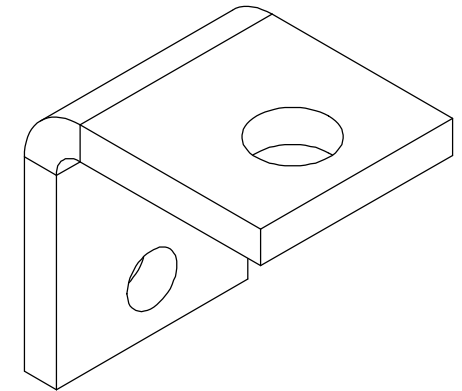
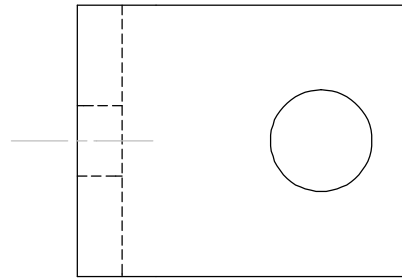
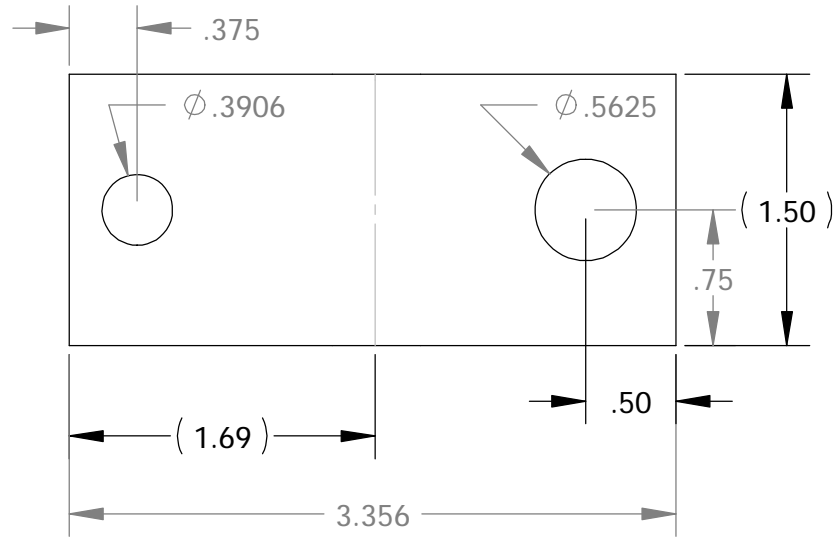
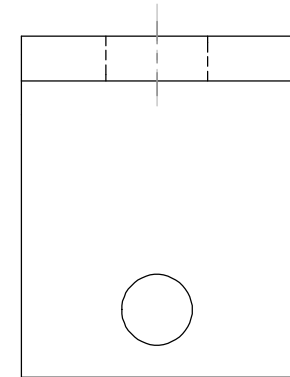
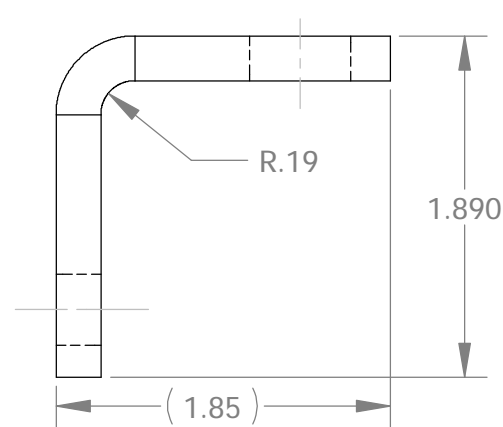


### FLAT VIEW



### FORMED VIEWS



#### NOTES:

- 1.) DIE # A - 24
- 2.) .1875" X 192" FLAT YIELDS 47 PCS.

ALL DIMENSIONS ARE IN INCHES  
UNLESS OTHERWISE STATED  
TOLERANCES EXCEPT AS NOTED  
DECIMALS:

.X     ±0.100  
.XX    ±0.060  
.XXX   ±0.030  
.XXXX  ±0.010

ANGLES:  
±1°

ALL FORMED ANGLES  
EQUAL 90° UNLESS  
NOTED OTHERWISE

( ) INDICATES REFERENCE

THE INFORMATION IN THIS DRAWING IS THE SOLE  
PROPERTY OF KARAVAN TRAILERS, INC. ANY  
REPRODUCTION IN PART OR WHOLE WITHOUT  
THE WRITTEN PERMISSION OF KARAVAN TRAILERS,  
INC. IS PROHIBITED.

APPROVED BY:

---

DRAWN BY:

---

DATE:

04-15-98

SHEET:

1 OF 1

SCALE:

N/A

**KARAVAN**  
TRAILERS

TITLE:

ROLLER BRACKET

MAT'L:

3/16" X 1.50" H.R.P.O. FLAT

FINISH:

-ZN

DWG. #:

**100-00047**

DWG. REV.	ECR/NDR NUMBER	REVISED BY	DATE	DESCRIPTION
J/2	14044	DLC	12-20-07	UPDATED DRAWING
J/1	14041	CPS	05-29-07	L-BRACKET WAS ROLLER BRACKET.

### First Piece - In Process Inspection Sheet

Vendor \_\_\_\_\_

Description: **Roller Bracket**

Part # **100-00047**

Rev. **J/2**

QA Approval: D. Dray

JOB# \_\_\_\_\_

Characteristic	Tol.	Method	Freq.	1st Piece	A/R	2	A/R	3	A/R	4	A/R	5	A/R	6	A/R	7	A/R	Inspected By/Date:	
<b>SHEAR</b>																			1 /
.1875	.179 - .195	Mic	1:500																2 /
H.R.P.O. FLAT	NA	Visual	1:500																3 /
<b>PUNCH</b>																			4 /
∅ .5625	±.010	Caliper	1st piece																5 /
.50	± .060	Caliper	1:500																6 /
.75	±.060	Caliper	1:500																7 /
∅ .3906	±.010	Caliper	1st piece																
.75	±.060	Caliper	1:500																
.375	± .030	Caliper	1:50																
<b>FORM</b>																			
1.890	± .030	Caliper	1:150																
R.19	NA	Radius Gauge	1st piece																
90°	± 1°	Square	1:150																