

ROLLER GUIDES

Assembly Instructions

Part # 86106

Thank you for purchasing the **TIE DOWN ENGINEERING Roller Guides**. Please review the following instructions before starting the assembly. With proper care, the Roller Guides will give you years of service.

Tools Required

9/16" Deep Socket, 9/16" Wrench,

Parts List

P/N 1.	Roller Guide Base	2 pcs.
P/N 2.	Long Roller Guide Bracket	2 pcs.
P/N 3.	Short Roller Guide Bracket	2 pcs.
P/N 4.	Angle Adjuster	2 pcs.
P/N 5.	Link Bar	2 pcs.
P/N 6.	Roller Shaft	2 pcs.
P/N 7.	U Bolt	2 pcs.
P/N 8.	Nyloc Nut 1/2"	4 pcs.
P/N 9.	1/2" 13NC Hex. Nut	2 pcs.
P/N 10.	Roller	2 pcs.
P/N 11.	2" End Cap	4 pcs.
P/N 12.	Pell Nut	6 pcs.
P/N 13.	Carriage Bolt 3/8" x 1"	4 pcs.
P/N 14.	Nyloc Nut 3/8"	4 pcs.

Figure 1.

Installing your Roller Guides.

Step 1. Determine the position for the guides on your trailer frame. (Roller Guides are normally installed halfway between wheels and back of trailer.)

Step 2. Place U Bolt over frame. Determine the hole in Angle Adjuster that most closely fits your frame width and slide Angle Adjuster over inside leg of U Bolt. **Note - For frames less than 3" wide and more than 3" deep, thread 1/2" nut onto U Bolt first.**

Step 3. Hold guide base under frame with U-bolt ends through slot in base. Place link bar over U-bolt, attach with nyloc nuts, hand tighten at this time.

Step 3. Insert Long Roller Guide Bracket into outside slot of Roller Guide Base as shown in Figure 1. Insert Carriage Bolt and turn Nut on loosely.

Step 4. Attach Pell Nut to one end of Roller Shaft only. Insert Short Roller Guide Bracket into any slot in Roller Guide Base and insert Roller as shown in Figure 2. Now insert Roller shaft from top. Repeat these steps, using the remaining two slots to determine the best Roller angle for your boat's hull.

Step 5. Once you have determined the correct Roller angle and slot, insert the remaining Carriage Bolt and loosely attach the nyloc nut.

Step 6. Now insert Roller between Long and Short Roller Guide Brackets and insert Roller Shaft through top End Cap, Roller and bottom End Cap. Attach remaining Pell Nut. Hold a hammer under Roller Shaft and tap top of Shaft to firmly attach Pell Nuts. (Your kit includes two extra Pell Nuts should you have to remove one.)

Step 7. Adjust Guide Base for boat width and torque all Nuts 20 to 25 ft./lbs. **Note - It is important to tighten U Bolt Nuts evenly.**

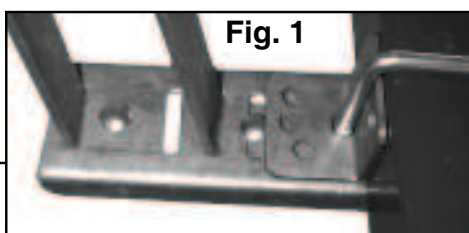


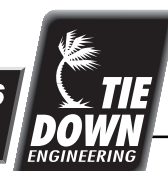
Fig. 1



Fig. 2

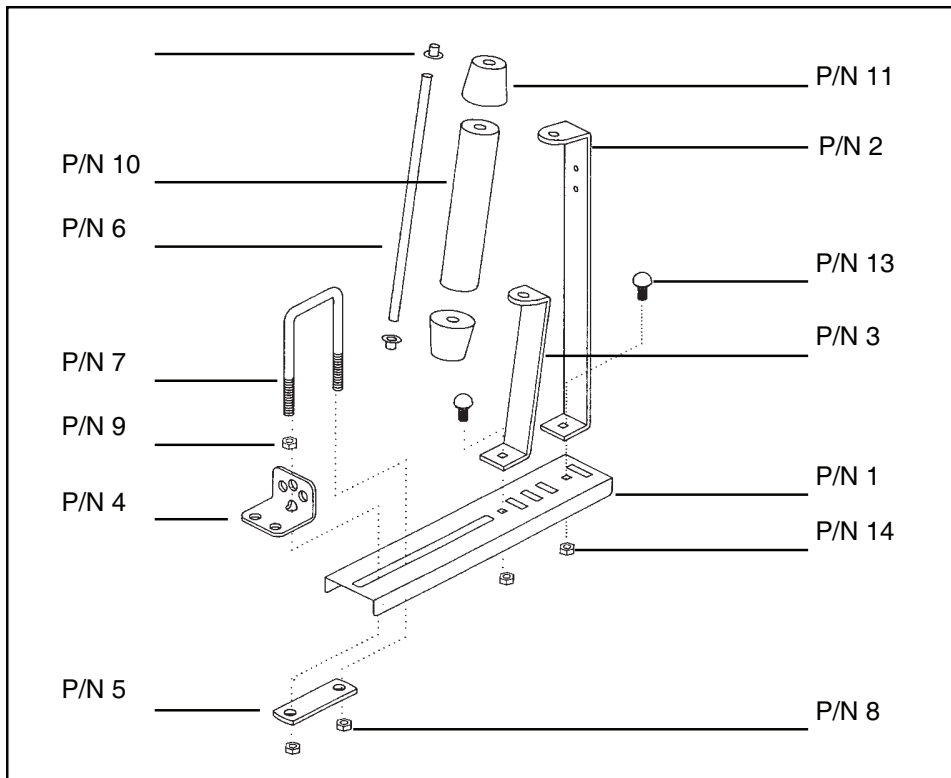
P/N 15309 / 022701,115

TIE DOWN ENGINEERING • 5901 Wheaton Drive • Atlanta GA, 30336
www.tiedown.com • (404) 344-0000 • FAX (404) 349-0401



Tools Required

9/16" Deep Socket, 9/16" Wrench,



P/N 15309 / 022701,115

TIE DOWN ENGINEERING • 5901 Wheaton Drive • Atlanta GA, 30336
www.tiedown.com • (404) 344-0000 • FAX (404) 349-0401

