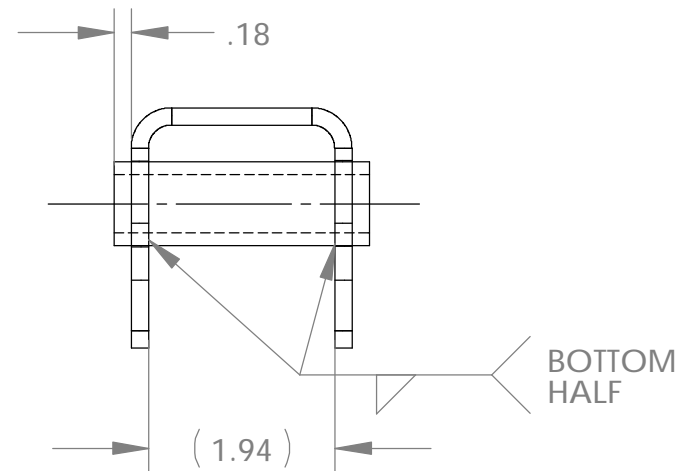
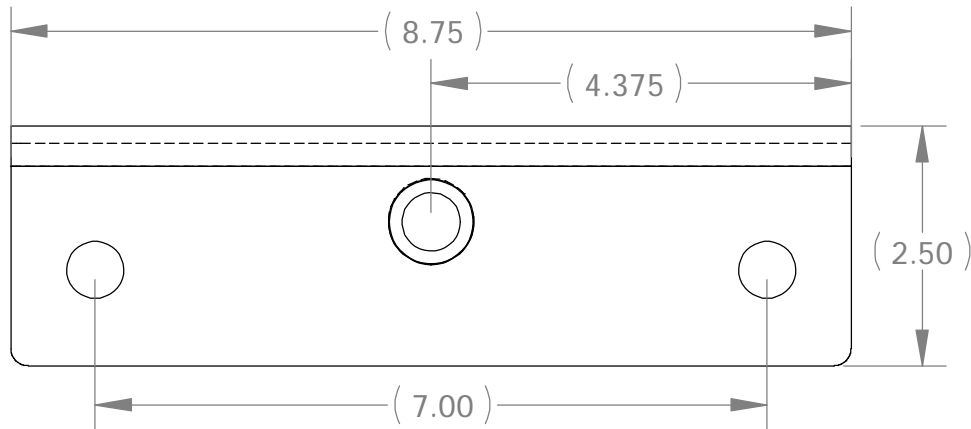
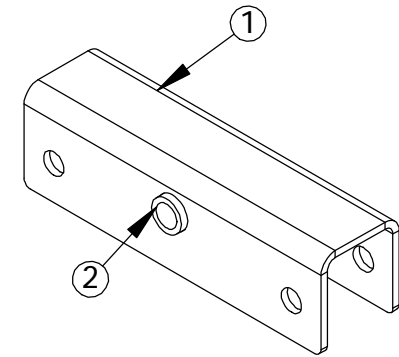
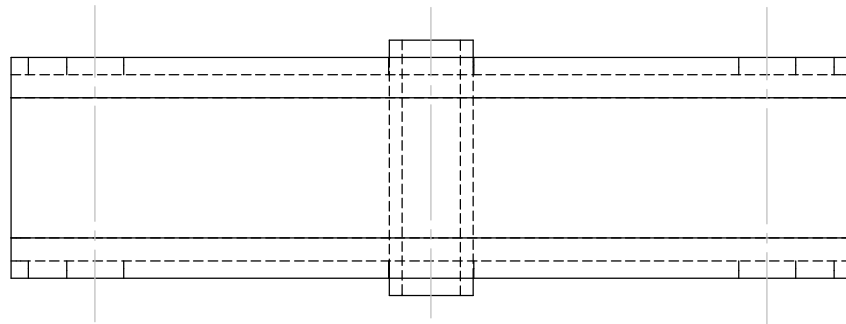


ITEM NO.	PART NO.	DESCRIPTION	QTY.
1	100-00305	EQUALIZER CHANNEL	1
2	100-00309	EQUALIZER PIVOT TUBE	1



ALL DIMENSIONS ARE IN INCHES
UNLESS OTHERWISE STATED
TOLERANCES EXCEPT AS NOTED

DECIMALS:

.X ±0.100
.XX ±0.060
.XXX ±0.030
.XXXX ±0.010

ANGLES:
±1°

ALL FORMED ANGLES
EQUAL 90° UNLESS
NOTED OTHERWISE

() INDICATES REFERENCE

THE INFORMATION IN THIS DRAWING IS THE SOLE
PROPERTY OF KARAVAN TRAILERS, INC. ANY
REPRODUCTION IN PART OR WHOLE WITHOUT
THE WRITTEN PERMISSION OF KARAVAN TRAILERS,
INC. IS PROHIBITED.

APPROVED BY:

DRAWN BY:

DATE: 05-07-97

SHEET: 1 OF 1

SCALE: N/A

KARAVAN

TRAILERS

TITLE: EQUALIZER WELDMENT

MAT'L: SEE B.O.M.

FINISH: ZINC PLATED

DWG. #: 300-00016

DWG. REV.	ECR/NDR NUMBER	REVISED BY	DATE	DESCRIPTION
C	12861	JDS	08-03-04	.18 WAS (.102) BOTH SIDES
B	10140	SSD	05-06-97	DRAWN 3D

First Piece - In Process Inspection Sheet

Vendor _____

Description: **Equalizer Weldment**

Part # **300-00016**

Rev. **C**

QA Approval: K. Baumhardt

JOB# _____

Characteristic	Tol.	Method	Freq.	1st Piece	A/R	2	A/R	3	A/R	4	A/R	5	A/R	6	A/R	7	A/R	Inspected By/Date:	
.18	±.060	Caliper	2X per shift																1 /
Weld per print	Y/N	Visual	2X per shift																2 /
Remove all visible weld splatter, every piece	NA	Visual	Document 4x per shift																3 /
																			4 /
																			5 /