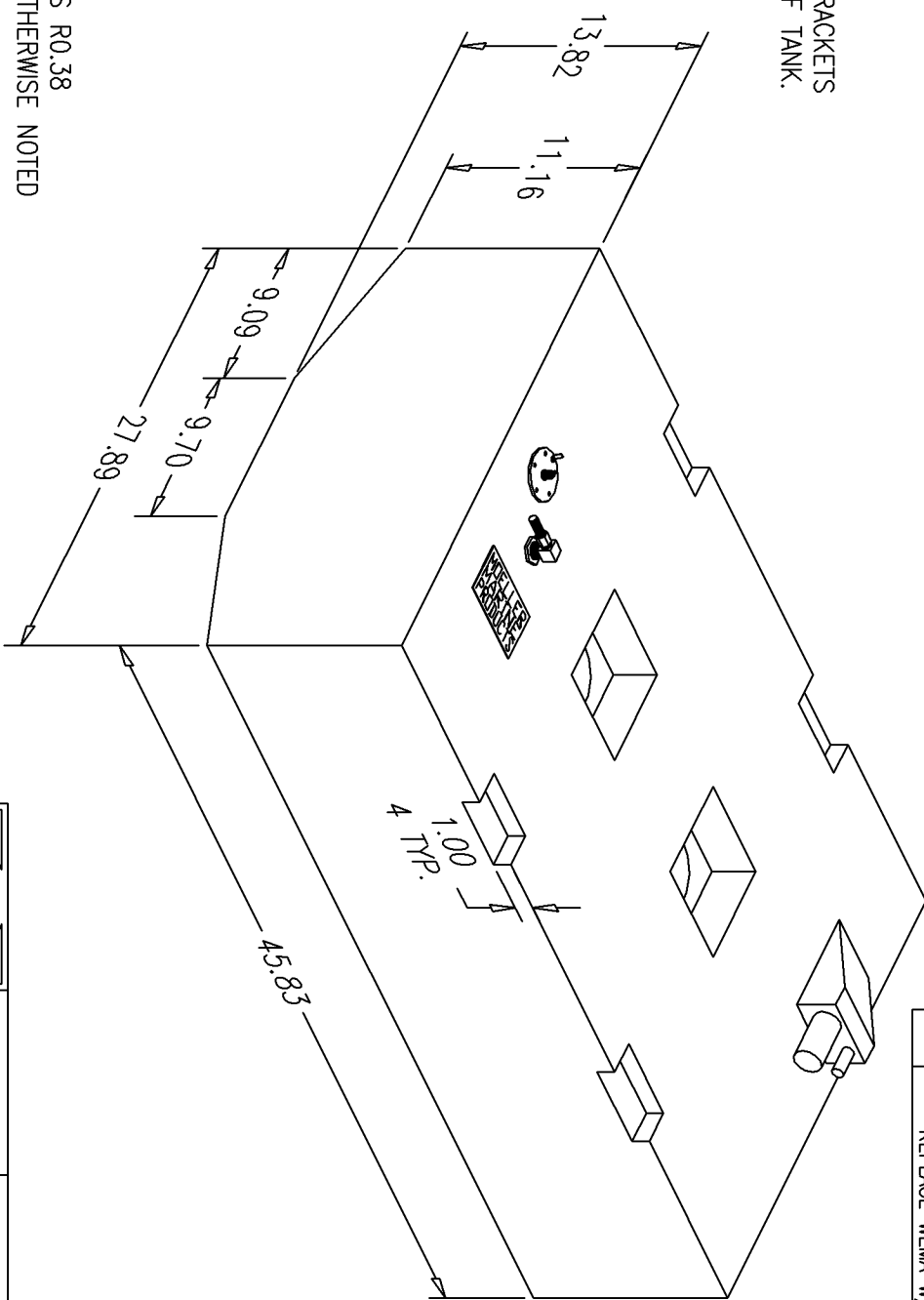


BILL OF MATERIALS	
Qty.	DESCRIPTION
1	ROCHESTER ECONOMY SENDER
1	PICKUP W/ 3/8" ANTI-SIPHON VALVE
4	4.00" PLASTIC BRACKETS (ZIP TIED TO TANK)
	MOLDED FILL AND VENT
	OVERALL HEIGHT 16.07"

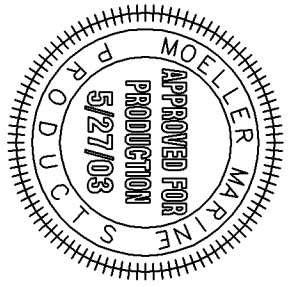
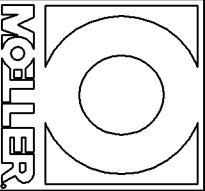
NO.	REVISION	DATE
1	ADD CONES AND RECESSES	6/17/97
2	MOVE SENDER, PICKUP, AND ROTATE DOGHOUSE	10/28/97
3	CHANGE STEWART WARNER TO WEMA SENDER	8/11/99
4	ZIP TIE L-BRACKETS TO TANK	6/12/00
5	ADD (4) NOTCHES, (4) PLASTIC BRACKETS, REMOVE (4) LARGE L-BRACKETS W/ INSERTS, & REPLACE WEMA W/ ROCHESTER SENDER.	4/3/02

NOTE: ATTACH BRACKETS TO TOP OF TANK.



NOTE: ALL EDGES R0.38 UNLESS OTHERWISE NOTED

THIS DRAWING AND THE ATTACHED DRAWINGS (AND THE DATA SHOWN THEREON) IS CONFIDENTIAL AND PROPRIETARY AND SHALL NOT BE USED, DISCLOSED TO OTHERS, REPRODUCED FOR ANY PURPOSE EXCEPT FOR QUOTATION TO OR ORDER BY MOELLER MARINE PRODUCTS, INC. AND/OR ITS SUBSIDIARIES WITHOUT THEIR WRITTEN CONSENT TO THE USE OF SUCH DRAWINGS AND/OR DATA.



DESCRIPTION	64 GALLON FUEL TANK	
PART #	FT6404	COLOR NATURAL
MATERIAL	CROSSLINK POLYETHYLENE	
TOLERANCES	±1.5% UNLESS OTHERWISE NOTED	
WALL THK.	0.235" NOMINAL	DATE 4/3/02
DRAWN BY	MOELLER ENGINEERING	

