

TRITON Customer Instruction Sheet

KIT NO.:
03173

DESCRIPTION

REV 1

DRAWN BY:

TF

DRAWING NO.:

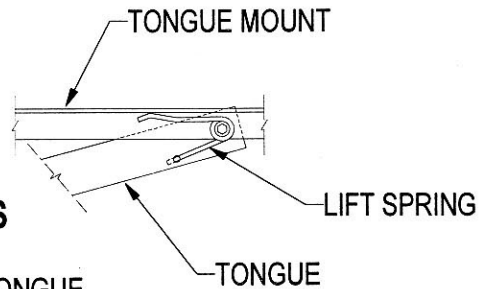
LIFT SPRING

DATE:
7-8-11

03197

Parts List

ITEM	PART N	DESCRIPTION	QTY
1	01098	NUT, HEX 1/2-13 LOC Z/Y	1
2	02410	WASHER, FLAT 1/2 Y/Z	2
3	03180	BUSHING, LIFT KIT	2
4	03182	SPRING, LIFT LP SIDE	1
5	03183	SPRING, LIFT NON-LP SIDE	1
6	15084	BOLT, 1/2-13 X 9 1/2 Z/Y	1



MOUNTING INSTRUCTIONS

-LAY TRAILER UPSIDE DOWN.

-REMOVE HARDWARE HOLDING TONGUE.

-HOLD TONGUE AT LEAST 90° UP WITH PIVOT HOLES IN ALIGNMENT AND INSTALL LIFT KIT WITH HARDWARE AS SHOWN. DO NOT OVER TIGHTEN BOLT.

-IF THE LOOSE END OF THE LIFT SPRING IS NOT IN PLACE, SNAP IT INTO PLACE. BE SURE THE LOOSE END IS RESTING AGAINST THE TONGUE MOUNT AND NOT AGAINST THE WOOD DECK.

