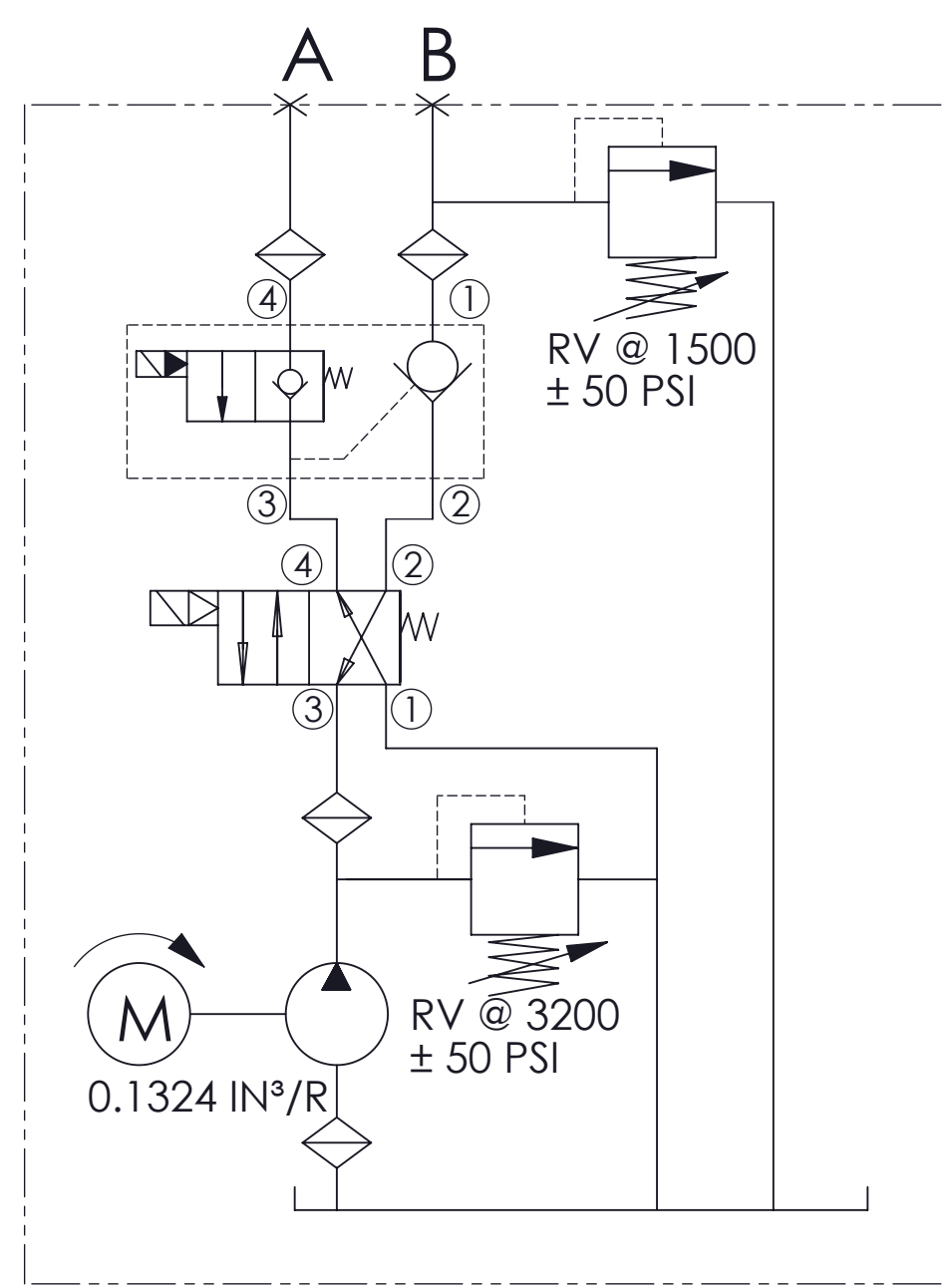
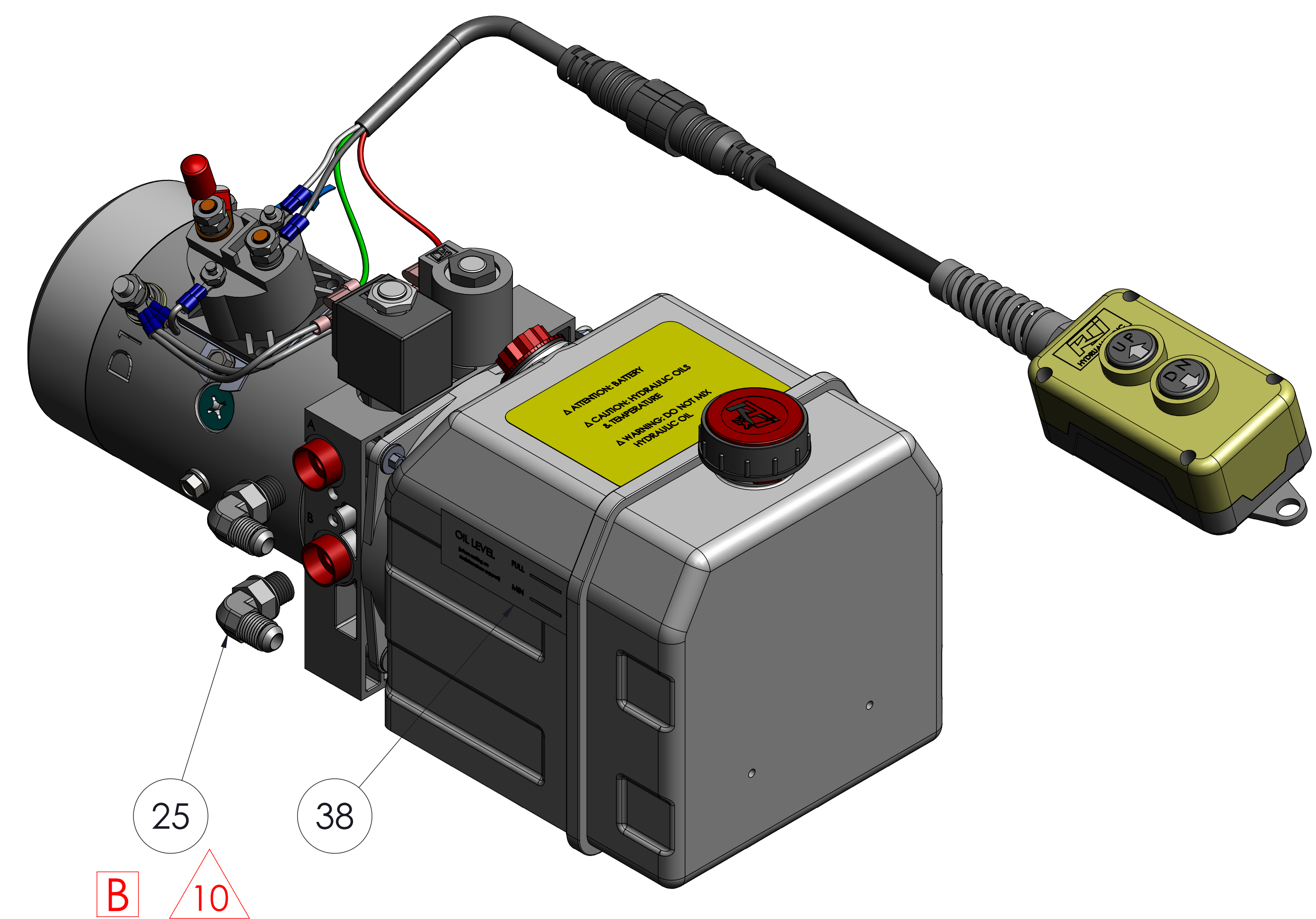
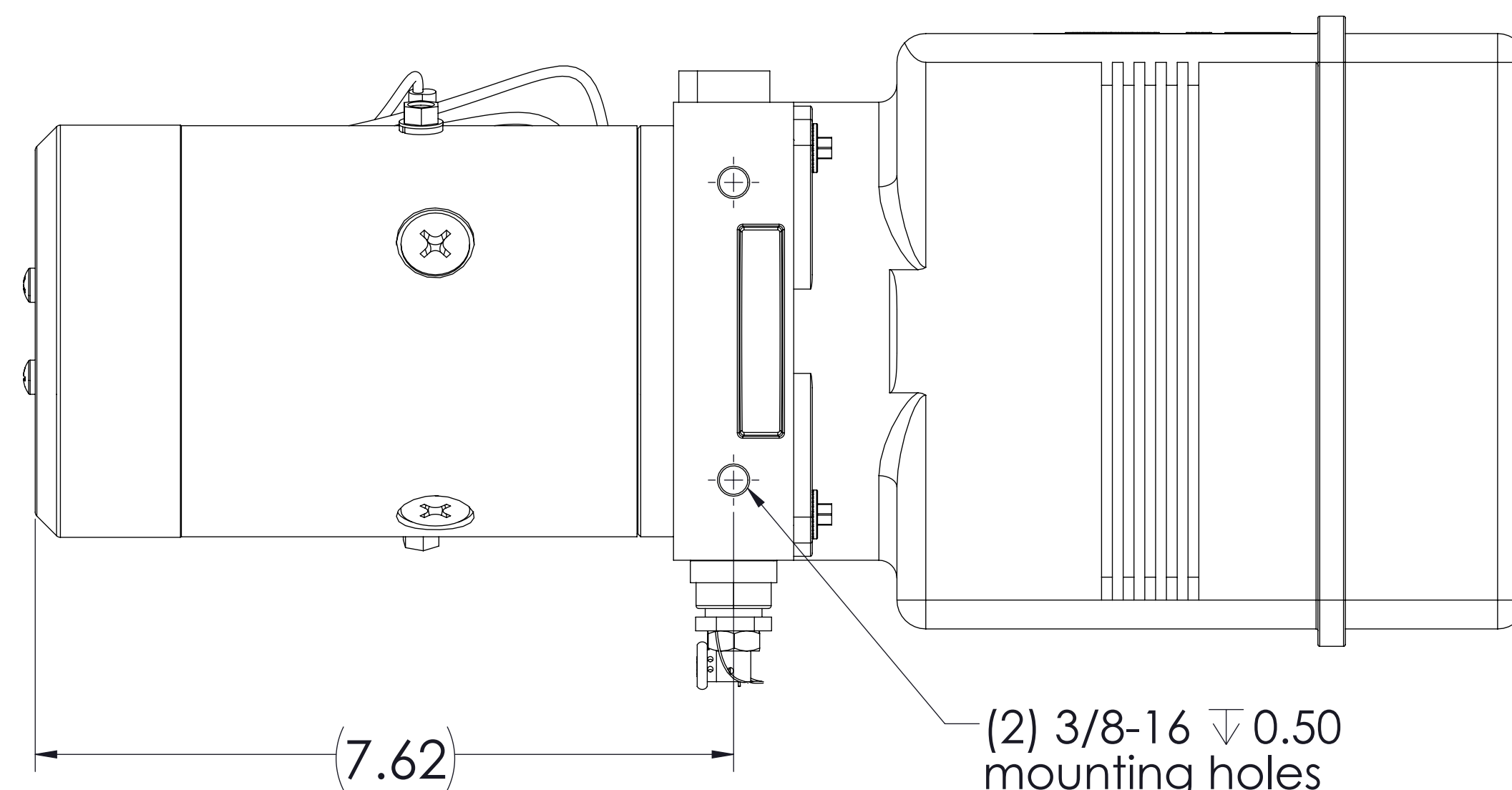
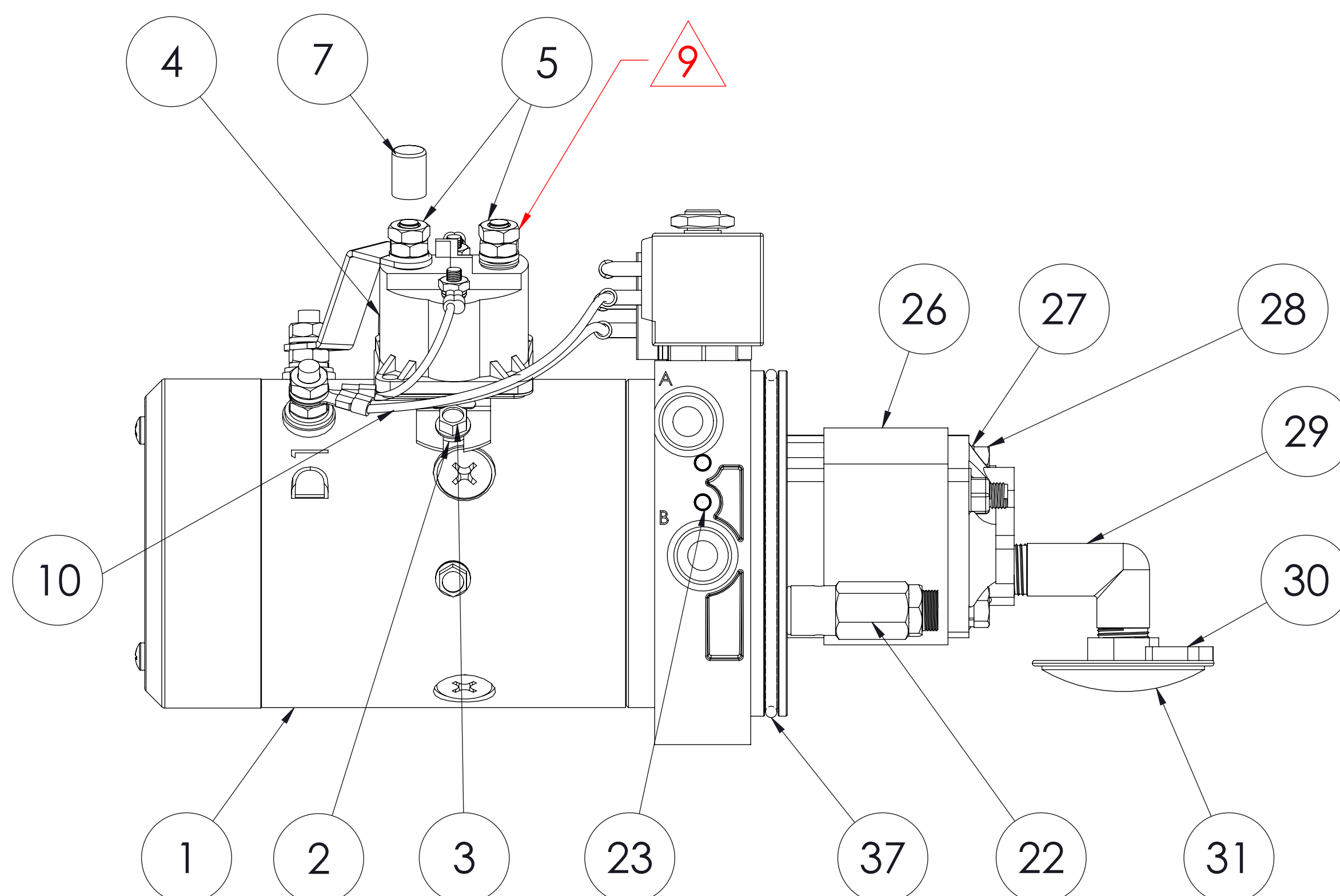
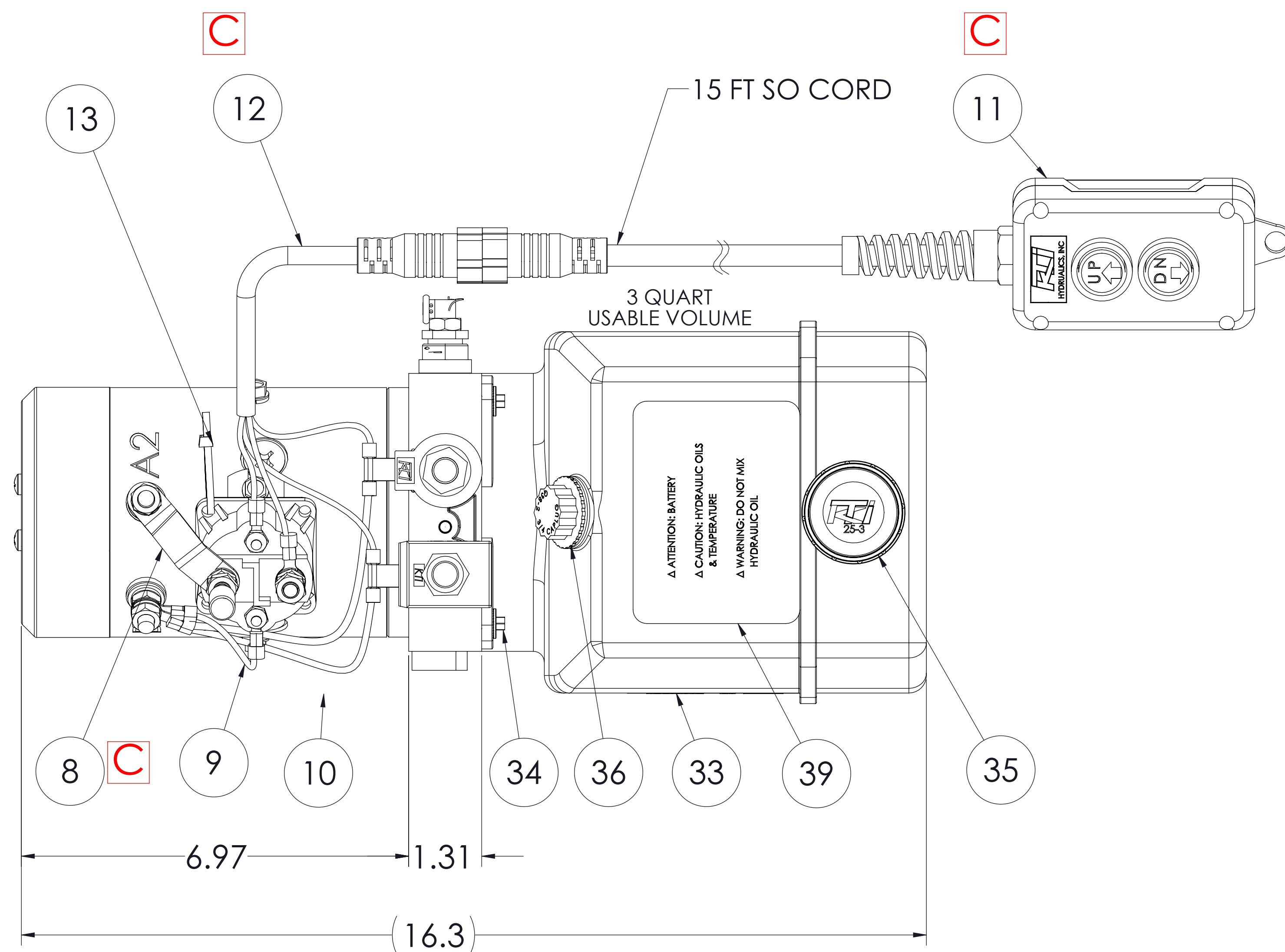
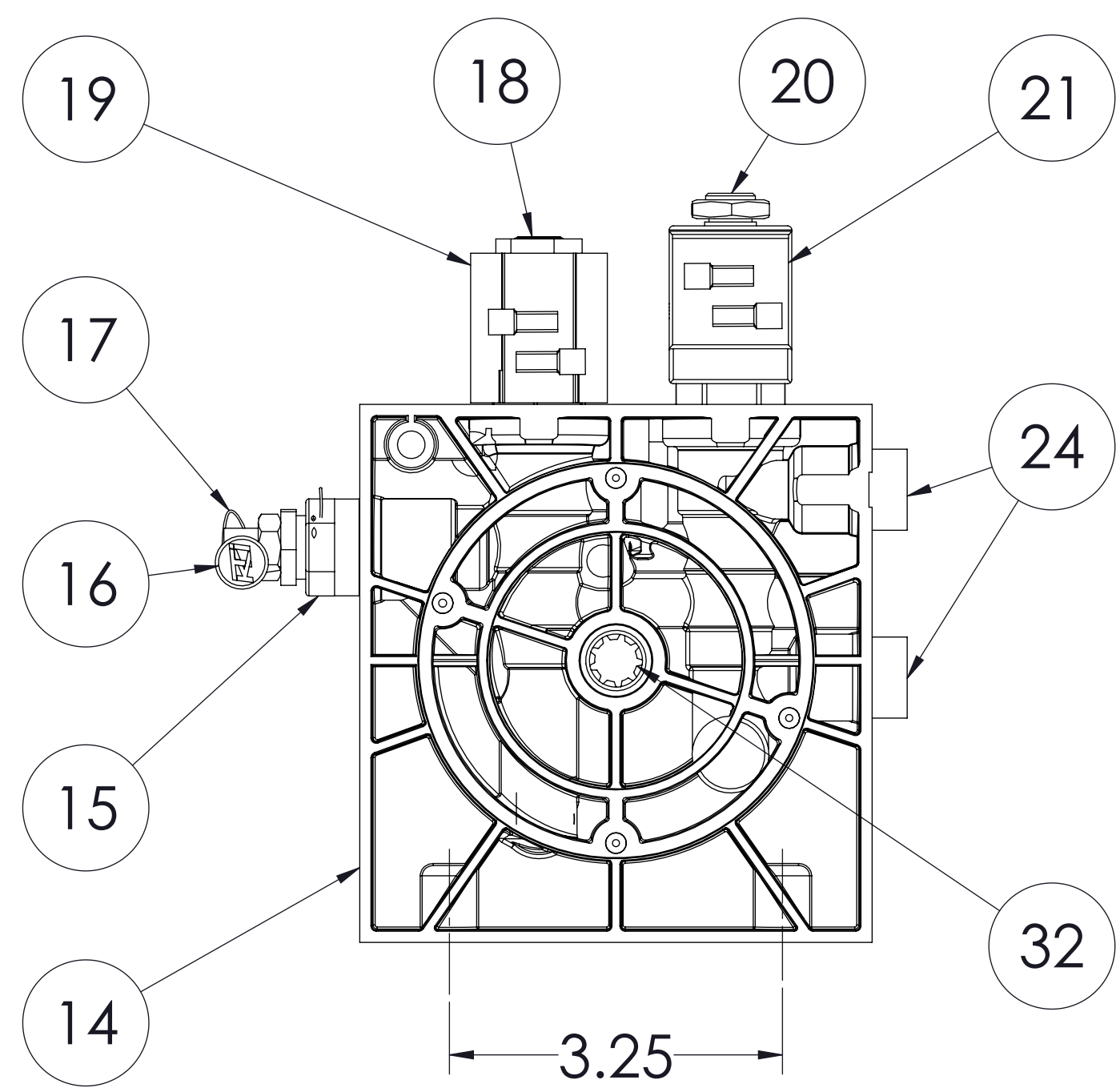
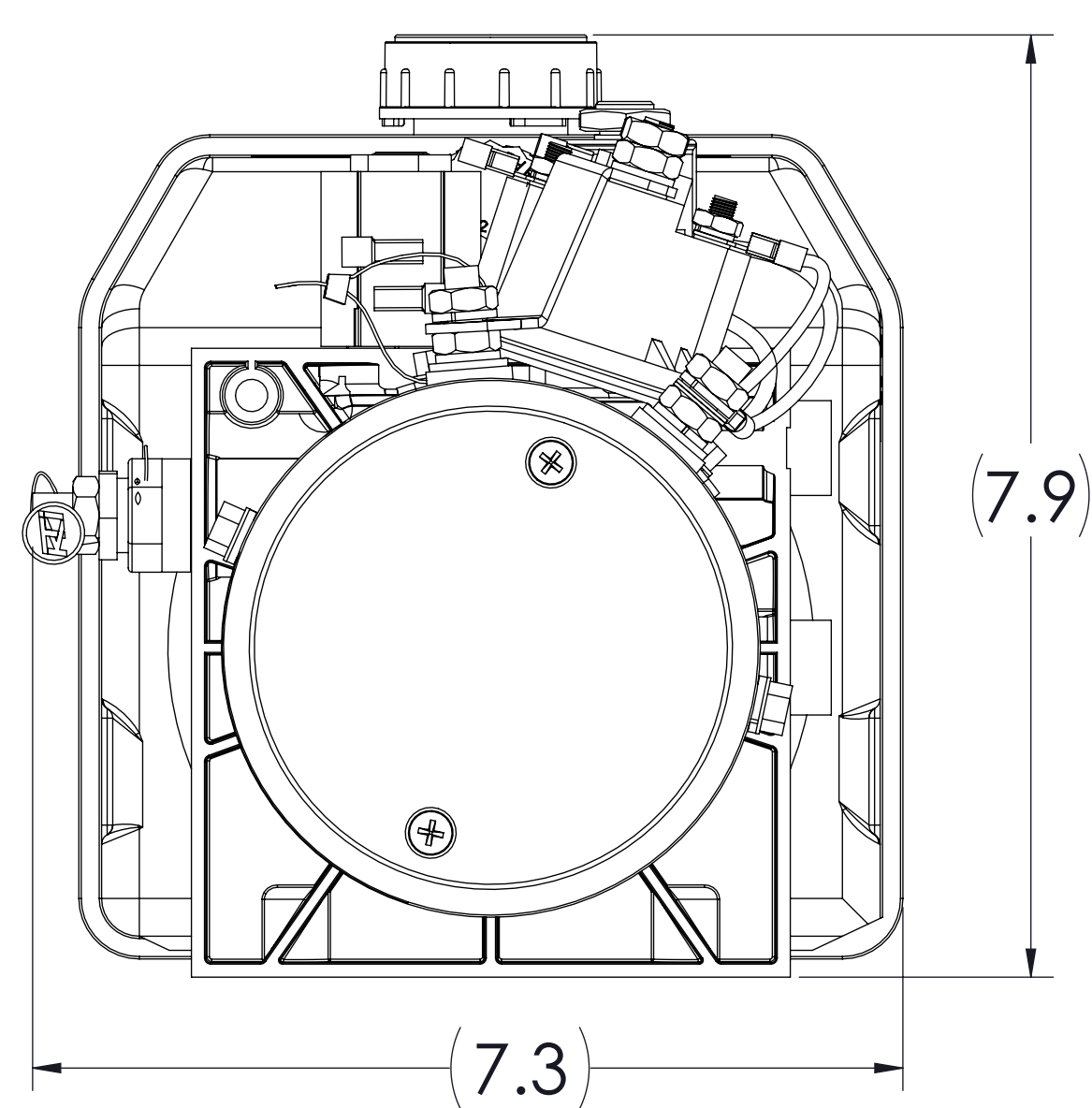


REV	ECR	DESCRIPTION	DATE	APPROVED
B	0614-005	ADD 2 PCS 6801-0606-NWO-FG FITTING TO POWER UNIT PER CUSTOMER AGGEMENT	06/26/14	
C	0215-001	CHANGE TO NEW QUICK DISCONNECT & POWER BUS BAR		



Circuit 111



ITEM NO.	PART NUMBER	DESCRIPTION	QTY.
1	1245-18	12V DC, (2) TERMINAL, ELECTRIC MOTOR	1
2	Q14-025	1/4" STEEL SPLIT LOCK WASHER	2
3	Q19-025-0038-23	1/4-20 X 3/8" STEEL HEX FLANGE HEAD SELF TAPPING SCREW	2
4	391-2-C	12V DC HEAVY DUTY PLASTIC START SOLENOID SWITCH /100 AMP (CADMIUM PLATED BRIDGE)	1
5	Q21-031	5/16-24 UNF HEX NUT	2
6	31-5	WARNING LABEL TAG, YELLOW, TORQUE SPEC (NOT SHOWN)	1
7	Q5-11	ROUND VINYL CAP PLUG, DIA 0.468" x 0.500", COLOR RED	1
8	27-108	POWER BAR 108 (MOTOR POWER TERMINAL TO SOLENOID POWER TERMINAL)	1
9	27-16	GROUND WIRE (MOTOR GROUND TERMINAL TO SOLENOID GROUND TERMINAL)	1
10	27-33	GROUND WIRE (MOTOR GROUND TERMINAL TO 2 COILS)	1
11	395-52	2 BUTTON 4 WIRE REMOTE PENDANT W/ MALE SOLID MOLD CYLINDRICAL QUICK DISCONNECT 15' CORD.	1
12	74-03	FEMALE SOLID MOLD TOWER HALF SHROUD CONNECTOR WITH 8 INCH CORD & 4 WIRES	1
13	Q37-2	NYLON BLACK CABLE TIE 8"	1
14	3920-108..	MACHINED COMPLETE CIRCUIT 108 MANIFOLD	1
15	LRV-080	CARTRIDGE RELIEF VALVE, ADJUSTABLE SET AT 3200 PSI	1
16	63-1	KTI WARRANTY LEAD SEAL	1
17	63-2	WIRE FOR RELIEF VALVE	1
18	LSV2-08-4CO	4W2P SPOOL TYPE CARTIDGE SOLENOID VALVE	1
19	LC2-08-C-5B	10V DC #8 CYLINDRICAL COIL W/ DUAL SPADE	1
20	LSPC-080-4-00	NC 2 WAY AND P.O.C IN 4 WAY CARTRIDGE VALVE	1
21	LC-08-S-5B	10V DC #8 SQUARE COIL W/ DUAL SPADE	1
22	RVSAE6-30	SECONDARY RELIEF VALVE W/SIDE EXHAUST PORTS. SET AT 1500 PSI	1
23	SX-6	EXPANDER SEALING PLUG. 6mm ZINC PLATED	4
24	Q5-6	SAE #6 (9/16-18) PLASTIC SHIPPING PLUG	2
25	6801-06-06-NWO-FG	#06 MALE JIC TO #06 MALE SAE O-RING BOSS, 90 DEG ELBOW FORGED	2
26	PL-2.10	PRESSURE LOADED GEAR PUMP (0.1324 IN <sup>3</sup> /R)	1
27	Q14-031	5/16" STEEL SPLIT LOCK WASHER	2
28	Q16-031-0325	5/16-24 x 3.25" HEX HEAD CAP SCREW, GRADE 5	2
29	21-1	3/8" NPT 90 DEGREE ALUMINUM DIE-CAST INLET ELBOW	1
30	23-1	RECTANGLE CARBON MAGNET	1
31	57-6	3/8" NPT INLET STRAINER, 120 MESH, PLEATED	1
32	52-23	9 TOOTH FEMALE SPLINE/FEMALE SLOT FOR TANG 1.676 TO 1.666	1
33	8181-35	3 QT PLASTIC OFFSET RESERVOIR	1
34	Q95-025-0050	1/4-20 x 0.50", 6mm HEX FLANGE LOCKING CAP SCREW	4
35	25-3	KTI 3/4 NPT 40 MICRON AIR BREATHER	1
36	Q38-2	KTI 3/4 NPT PLASTIC PLUG W/ NEOPRENE GASKET	1
37	Q2-4113	O-RING, I.D. 113mm, C/S 4mm. METRIC BUNA, RESERVOIR	1
38	31-2	OIL LEVEL LABEL	1
39	31-9	WARNING LABEL, BATTERY & OIL TEMP	1

GENERAL INSTRUCTIONS

- TORQUE PUMP MOUNTING CAP SCREWS TO 15-16 LB/FT.
- TORQUE MOTOR MOUNTING CAP SCREWS TO 8 LB/FT.
- TORQUE LRV-080, LSV2-08-4CO AND LSPC-080-4-00 TO 18 FT/LB.
- SET LRV-080 @ 3200 PSI, RVSAE6-30 @ 1500 PSI.
- TORQUE COILS LC2-08-C-5B AND LC-08-S-5B FINGER TIGHT.
- TORQUE STUDS ON START SOLENOID 391-2-C TO 42 IN/LB MAX.
- 391-2-C & 74-03 WIRES COMPLETED.
- TEST COMPLETE PER TS/DC 4442.
- INSTALL ITEM #6(WARNING LABEL TAG) AFTER TEST COMPLETED.
- SHIP LOOSE 2 PCS 6801-0606-NWO-FG FITTING WITH POWER UNIT.

PROPRIETARY AND CONFIDENTIAL  
THE INFORMATION CONTAINED IN THIS DRAWING IS THE SOLE PROPERTY OF KTI HYDRAULICS INC. ANY REPRODUCTION IN PART OR AS A WHOLE WITHOUT THE WRITTEN PERMISSION OF KTI HYDRAULICS INC. IS PROHIBITED.

UNLESS OTHERWISE SPECIFIED:	DRAWN	NAME	DATE
DIMENSIONS ARE IN INCHES	K. LAI		10/07/13
TOLERANCES ARE:	CHECKED		
FRACTIONS DECIMALS ANGLES	ENG APPR.		
xxx ± .005 ± 1°	MFG APPR.		
INTERPRET GEOMETRIC TOLERANCING PER:	G.A.		
MATERIAL	COMMENTS:		

**KTI HYDRAULICS INCORPORATED**

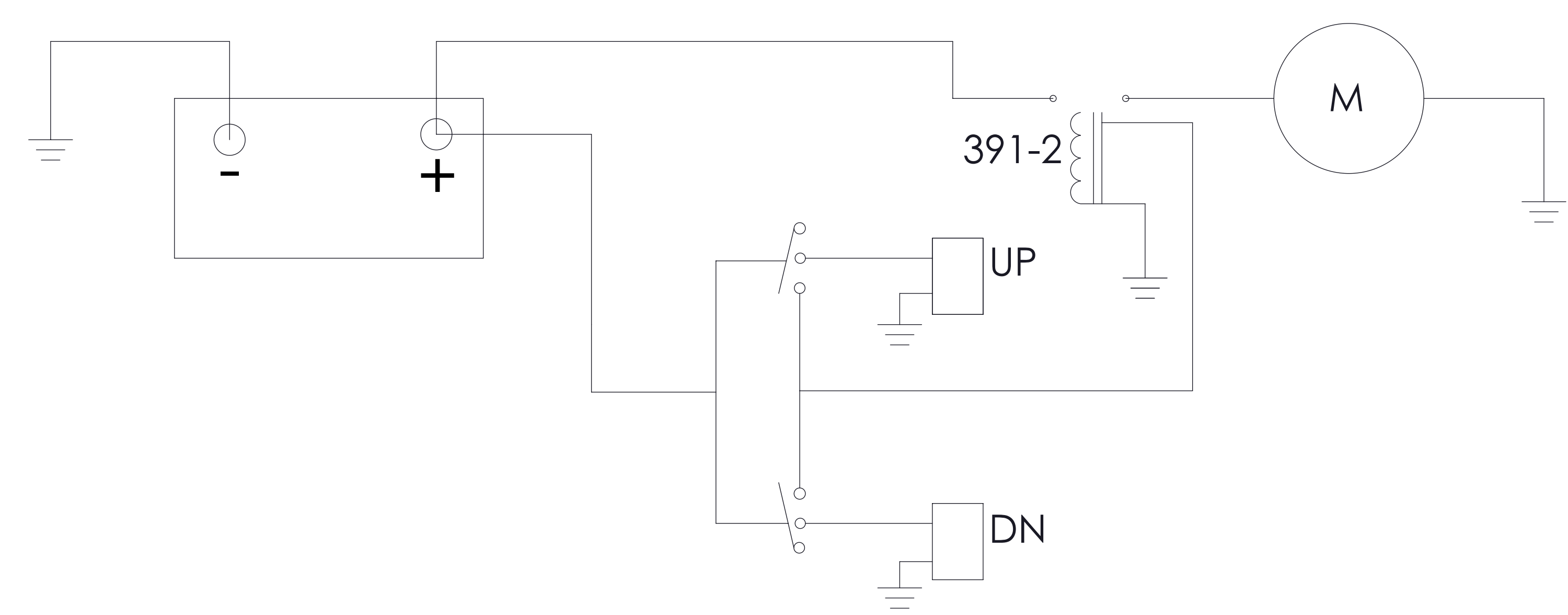
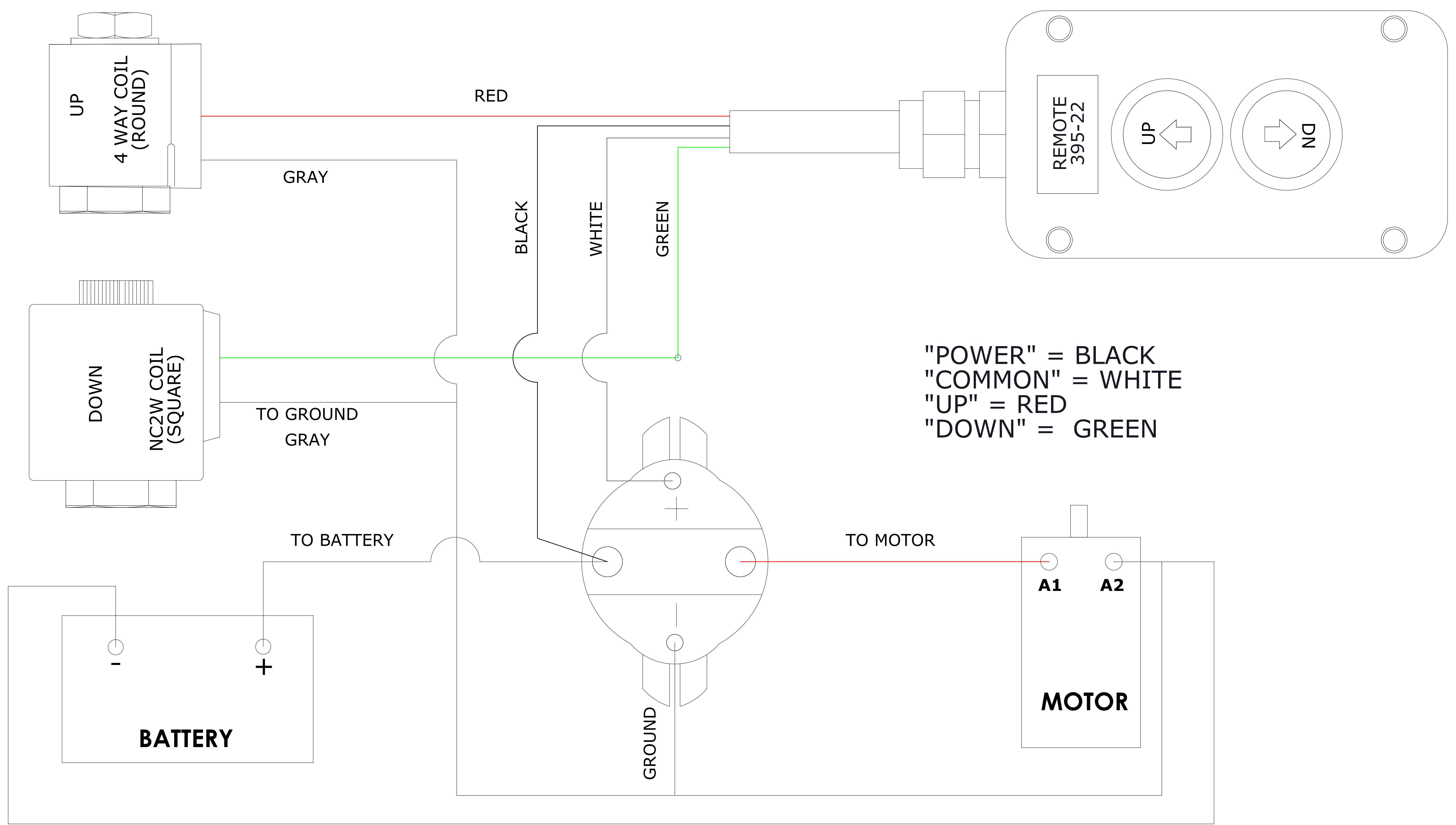
TITLE: KTI 12V DC POWER UNITS (HORIZONTAL MOUNTING)

SIZE DWG. NO. REV  
D DC 4442 C

SCALE: WEIGHT: SHEET 1 OF 2

NEXT ASSY	USED ON	FINISH
	CIRCUIT 111	

REVISIONS				
ZONE	REV.	DESCRIPTION	DATE	APPROVED



PROPRIETARY AND CONFIDENTIAL  
 THE INFORMATION CONTAINED IN THIS DRAWING IS THE SOLE PROPERTY OF KTI HYDRAULICS INC. ANY REPRODUCTION IN PART OR AS A WHOLE WITHOUT THE WRITTEN PERMISSION OF KTI HYDRAULICS INC. IS PROHIBITED.

UNLESS OTHERWISE SPECIFIED: DIMENSIONS ARE IN INCHES TOLERANCES ARE: FRACTIONS DECIMALS ANGLES XXX ±.005    .1"		NAME K. LAI	DATE 10/07/13	
INTERPRET GEOMETRIC TOLERANCING PER: MATERIAL		ENG APPR.	MFG APPR.	
NEXT ASSY		USED ON		TITLE: <b>WIRING DIAGRAM</b>
APPLICATION	CIRCUIT 111	FINISH	COMMENTS:	SIZE DWG. NO. REV D DC 4442 C
SCALE:		WEIGHT:	SHEET 2 OF 2	