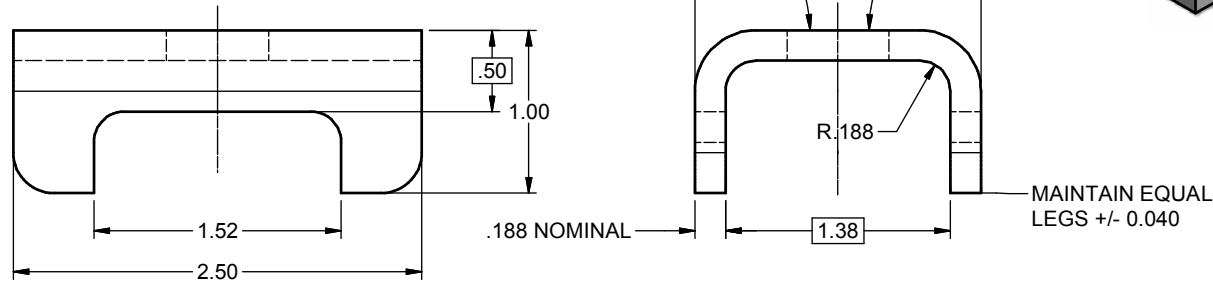
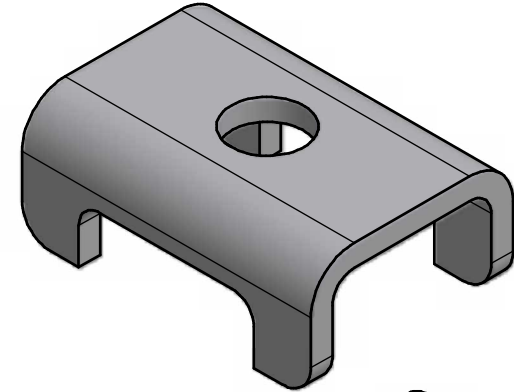
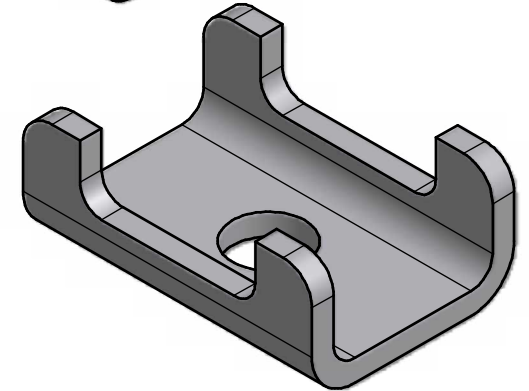
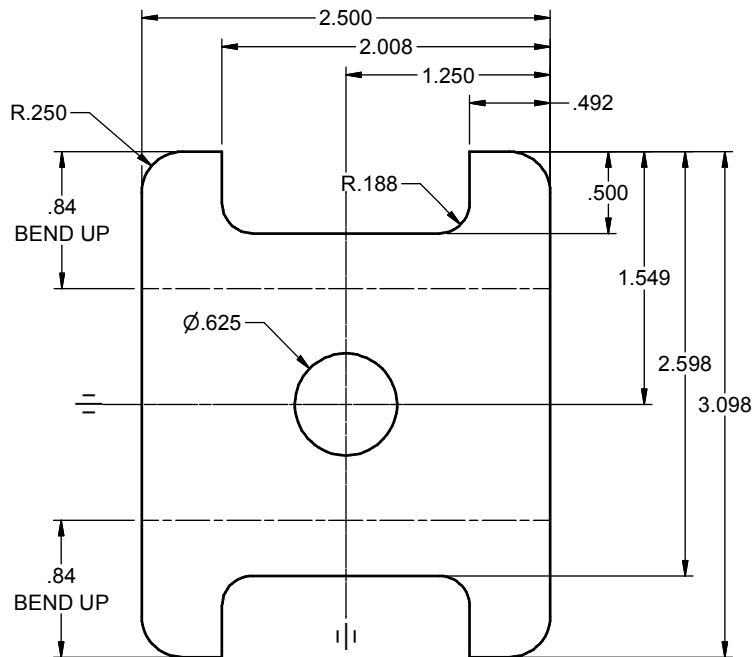


FORMED PART




FLAT PATTERN



NOTE:

1. ALL DIMENSIONS ARE IN INCHES.
2. BOXED DIMENSIONS INDICATE OPERATOR Q.C. CHECK.
3. PART TO BE FREE OF LASER SLAG, BURRS, SHARP EDGES & VISIBLE FLAWS.
4. MATERIAL IS TDE No. 18921 - Sheet 7 Ga. (.168/.176) x 60 x 120 HR/P&O.
5. FINAL FINISH - HOT DIP GALVANIZED

CONFIDENTIALITY NOTICE: THIS DRAWING AND ALL INFORMATION CONTAINED WITHIN IT ARE THE PROPERTY OF TIE DOWN ENGINEERING, ATLANTA, GA 30336. ALL RIGHTS ARE RESERVED.

Date: 8/16/2010	Unspecified Tolerances:	 Tie Down Engineering 5901 Wheaton Drive Atlanta Georgia 0336
Design:	Decimal ± 0.1 Decimal ± .03 Decimal ± .015 Angles ± 1.0° Holes ± .008	
Drawn: KFV	Part Name: SPRING SEAT - FOR 1 1/2 SQ. AXLE TUBE	
Approved:	Material: HR/P&O SHEET - TDE No. 18921, 7 Ga. x 2.50 x 3.10 L.	
	Part No.: 43784	Sht.: 1 of 1 Rev.: 0