

TIRE & WHEEL MAINTENANCE GUIDE

GENERAL MAINTENANCE

The simplest way to ensure the longest life and mileage from your tires is to perform a frequent inspection for proper wheel torque, tire inflation (as stated on the tire sidewall or by the manufacturer's placard), even tread wear, and to visually confirm that there is no damage to your tire/wheel.

PROPER INFLATION PRESSURE

The proper tire inflation is critical for safety, performance, and longevity. Trailer tires derive their load carrying capacity in large part from their inflated pressure; failure to maintain the proper levels can drastically increase the likelihood of a tire failure. Always use a properly calibrated pressure gauge to frequently test the air pressure of your tires.



LOAD LIMITS

Always check your owner's manual to ensure that your tire/wheel is operating within its limits of carrying capacity. Overloading a tire/wheel assembly can cause poor handling, premature wear, and is the leading cause of tire failure. Never install new tires/wheels that are rated with a lower load capacity than those shown on the vehicle placard.

ARISUN
STEEL BELTED BIAS

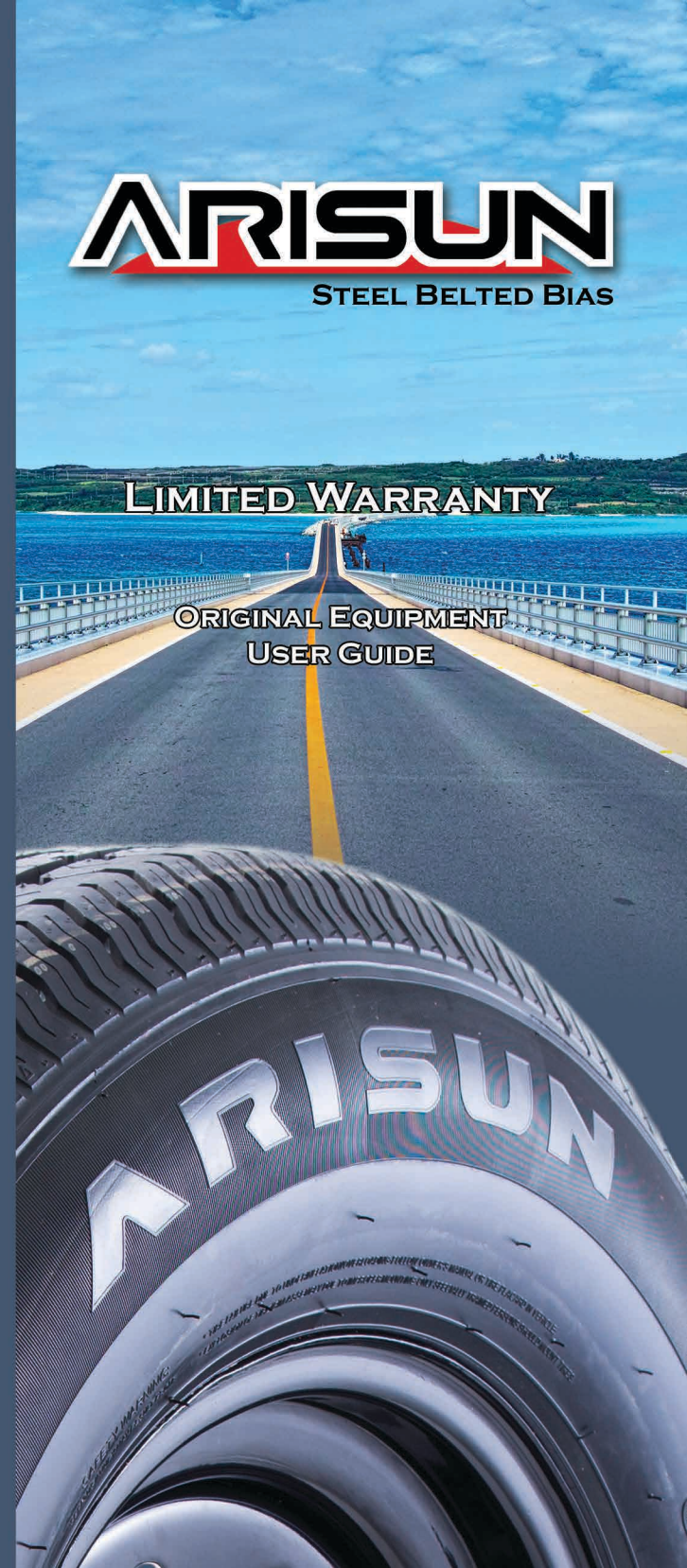
Tredit
855-8-TREDIT

WWW.TREDITTIRE.COM

ARISUN
STEEL BELTED BIAS

LIMITED WARRANTY

ORIGINAL EQUIPMENT
USER GUIDE





The Arisun Steel Belted Bias design uses two or more layers of nylon cord PLUS two steel belt layers beneath the tread. This construction creates a reinforced carcass that offers additional support and a more rigid inner material to bond with the tread.

Resulting in:

- Improved Tire Tracking
- Increased Tread wear ability
- Longer tire life
- Reduced Heat Build-up
- Smoother Ride
- Reduced Rolling Resistance

| Tire Size | LR/PR | Section Width | Overall Diameter | Max Load | PSI |
|-------------|-------|---------------|------------------|----------|-----|
| ST175/80D13 | C/6 | 8 | 26.1 | 1360 | 50 |
| ST205/75D14 | C/6 | 8 | 26.1 | 1760 | 50 |
| ST205/75D15 | C/6 | 8 | 27.1 | 1820 | 50 |
| ST225/75D15 | D/8 | 8.8 | 28.3 | 2540 | 65 |

For additional sizing and details visit us at:

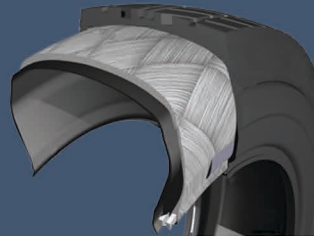
WWW.TREDITTIRE.COM



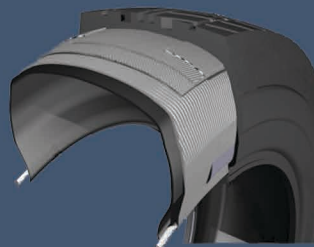
TRADITIONAL BIAS Vs STEEL BELTED BIAS

In a traditional bias ply tire, two or more layers of nylon cords are wrapped at 30-38 degree angles from bead to bead to produce the support and carcass. Layers must be an even number to maintain stability.

Traditional Bias Tire



Arisun Steel Belted Bias



LIMITED WARRANTY

What this Warranty Covers

Subject to the terms and conditions stated in this Limited Warranty, Tredit will replace or provide an appropriate allowance for, any Arisun Series tire sold and used in the United States and/or Canada, that fails due to a defect in material and/or workmanship including weather cracking for a period of two (2) years from the date of purchase. The date of purchase shall be determined by referencing your trailer or tire invoice. If you cannot provide your trailer or tire invoice, your coverage will be determined with reference to the date of tire manufacture, determined by the Department of Transportation (DOT) prescribed tire identification numbers, located on the sidewall of the tire.

What You Must Do

In order to make a claim under this Limited Warranty, you must present the failed tire to a Tredit Tire distributor or participating dealer in the USA or Canada, along with proof of your purchase date, such as an original trailer dealer or tire retailer invoice or contact Tredit at (855) 8-TREDIT. Tires accepted for claim under this Limited Warranty become the property of Tredit. You must make your claim within 30 days of your discovery of the alleged defect. You must pay the adjusted price of the new tire (current retail price less applicable allowance).

-Steel Belted Bias Tire – this design uses two or more layers of nylon cord PLUS two steel belt layers beneath the tread.

-This construction creates a reinforced carcass that offers additional support and a more rigid inner material to bond with the tread.

-2 Year Warranty (from date of RETAIL sale)

