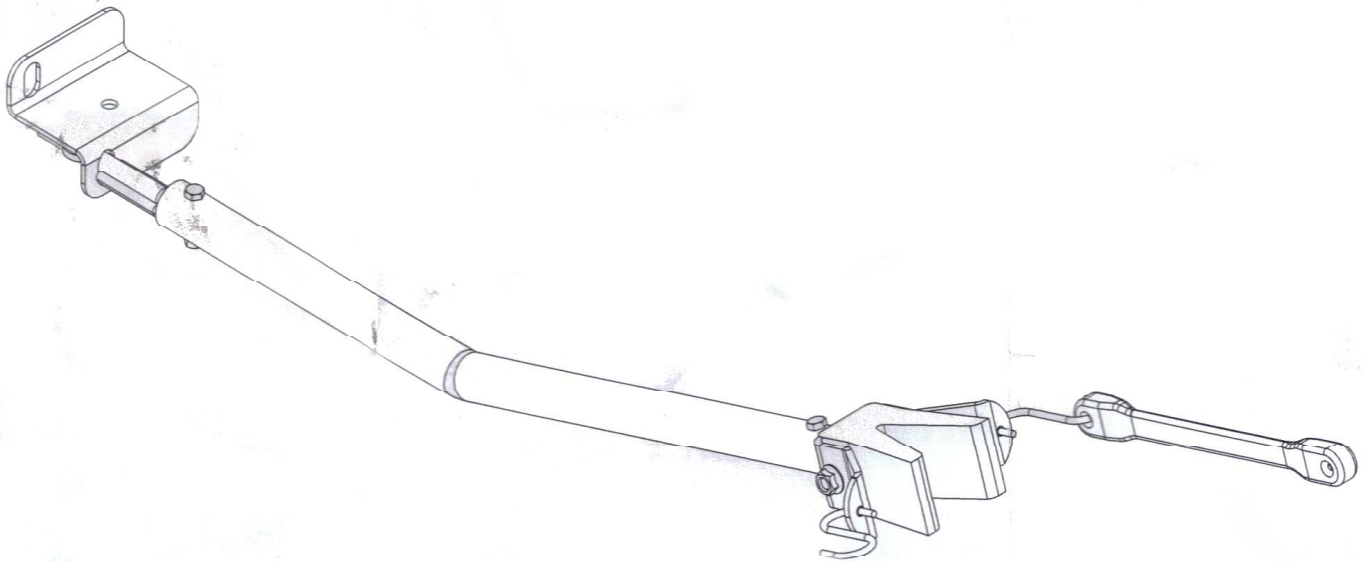


6133300 & 6133400 Transom Savers



6133300 - Transom Saver Assembly - 41"

6133400 - Transom Saver Assembly - 22"

NOTE:

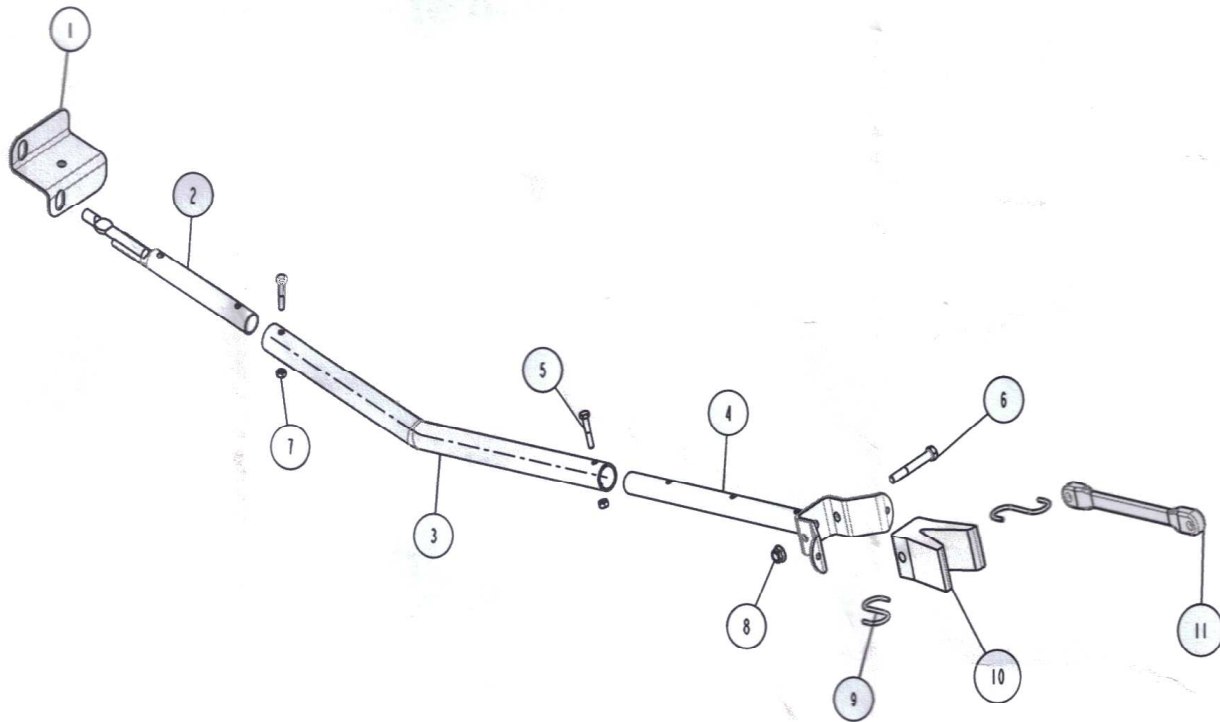
6133400 is adjustable from 26" to 38", connects to a 2x4 or 2x5 trailer with 2x3 & 3x3 rear crossmember.

6133300 is adjustable from 45" to 57", connects to a 2x4 or 2x5 trailer with 2x3 & 3x3 rear crossmember.

The transom saver is adjustable on each end to fit most applications.

Fishing Series: The transom saver is secured to the trailer by rotating 90° while inserting it into the slotted hole in the rear crossmember or rear pivot. If the trailer has an 8" keel roller bracket, the unit may be secured into the vertical adjustment slot.

2x3 & 2x4 Frames: Remove the 3/8" lock nut that secures the plastic protector pad to the rear pivot or rear crossmember and attach the mounting bracket. Secure the bracket with the 3/8" lock nut that was earlier removed and tighten. Rotate the transom saver 90° and insert it into the slot in the bracket. When the unit is returned to its normal position, the transom saver is locked in the bracket.



ITEM	PART #	DESCRIPTION	QTY	NOTE
1	61295	TRANSOM SAVER MTG BRKT	1	
2	61318	ADJ TRANSOM SAVER W/WENT ZYU	1	
3	62288	TRANSOM SAVER TUBE 24 1/2IN	1	A
4	62289	V BLOCK MOUNT W/WENT 3 HOLE ZYU	1	
5	0110021	HH 1/4-20 X 1 1/2 CS GR5	2	
6	0120052	HH 3/8-16 X 2 3/4 CS GR5	1	
7	1410059	HEX LOCKNUT 1/4-20 GRA	2	
8	1440101	HEX LOCKNUT FLANGE 3/8-16 W/T	1	
9	1920010	S HOOK 2 1/2IN GALVANIZED	2	
10	3510069	V-BLOCK FOR TRANSOM SAVER	1	
11	3520006	STRAP TIE-DOWN 15IN RUBBER	1	

NOTES	
A	6133300 TRANSOM SAVER ASSEMBLY USES TUBE 61335