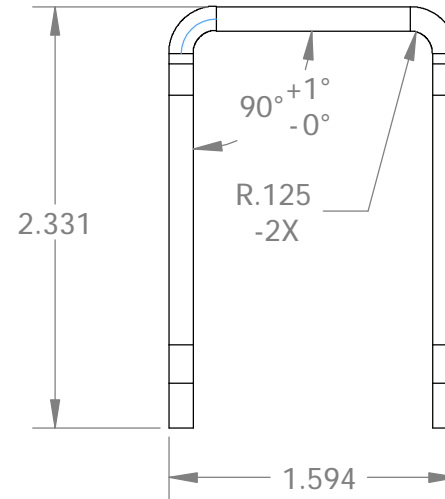
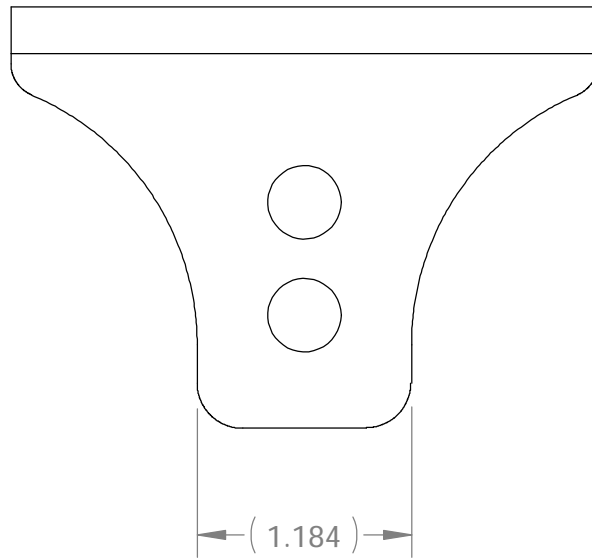
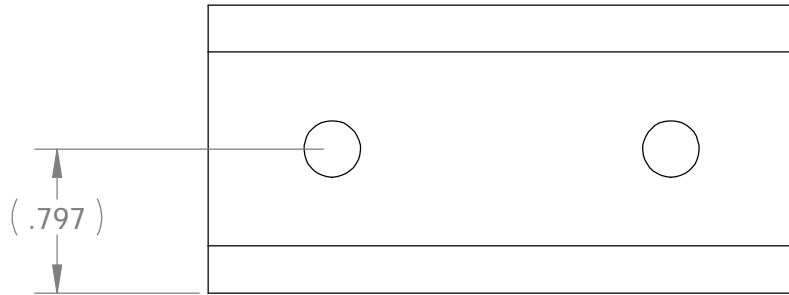
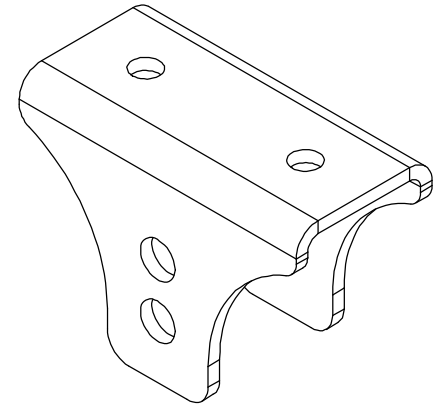


FORMED VIEWS



NOTES:

1.) DIE # PP-130

DWG. REV.	ECR/NDR NUMBER	REVISED BY	DATE	DESCRIPTION
D	15197	KMH	09-15-10	ADDED .238" TO OVERALL LENGTH & ADDED ϕ .4063 HOLE -2X
C	13198	RLR	07-13-05	90° +1/-0 WAS +/-1

ALL DIMENSIONS ARE IN INCHES
UNLESS OTHERWISE STATED
TOLERANCES EXCEPT AS NOTED
DECIMALS:
.X ±0.100
.XX ±0.060
.XXX ±0.030
.XXXX ±0.010
ANGLES:
±1°
ALL FORMED ANGLES
EQUAL 90° UNLESS
NOTED OTHERWISE
() INDICATES REFERENCE

THE INFORMATION IN THIS DRAWING IS THE SOLE
PROPERTY OF KARAVAN TRAILERS, INC. ANY
REPRODUCTION IN PART OR WHOLE WITHOUT
THE WRITTEN PERMISSION OF KARAVAN TRAILERS,
INC. IS PROHIBITED.

APPROVED BY:

DRAWN BY:
JUSTIN D. SCHMIDT

DATE: 12-29-04

SHEET: 1 OF 2

SCALE: N/A

KARAVAN

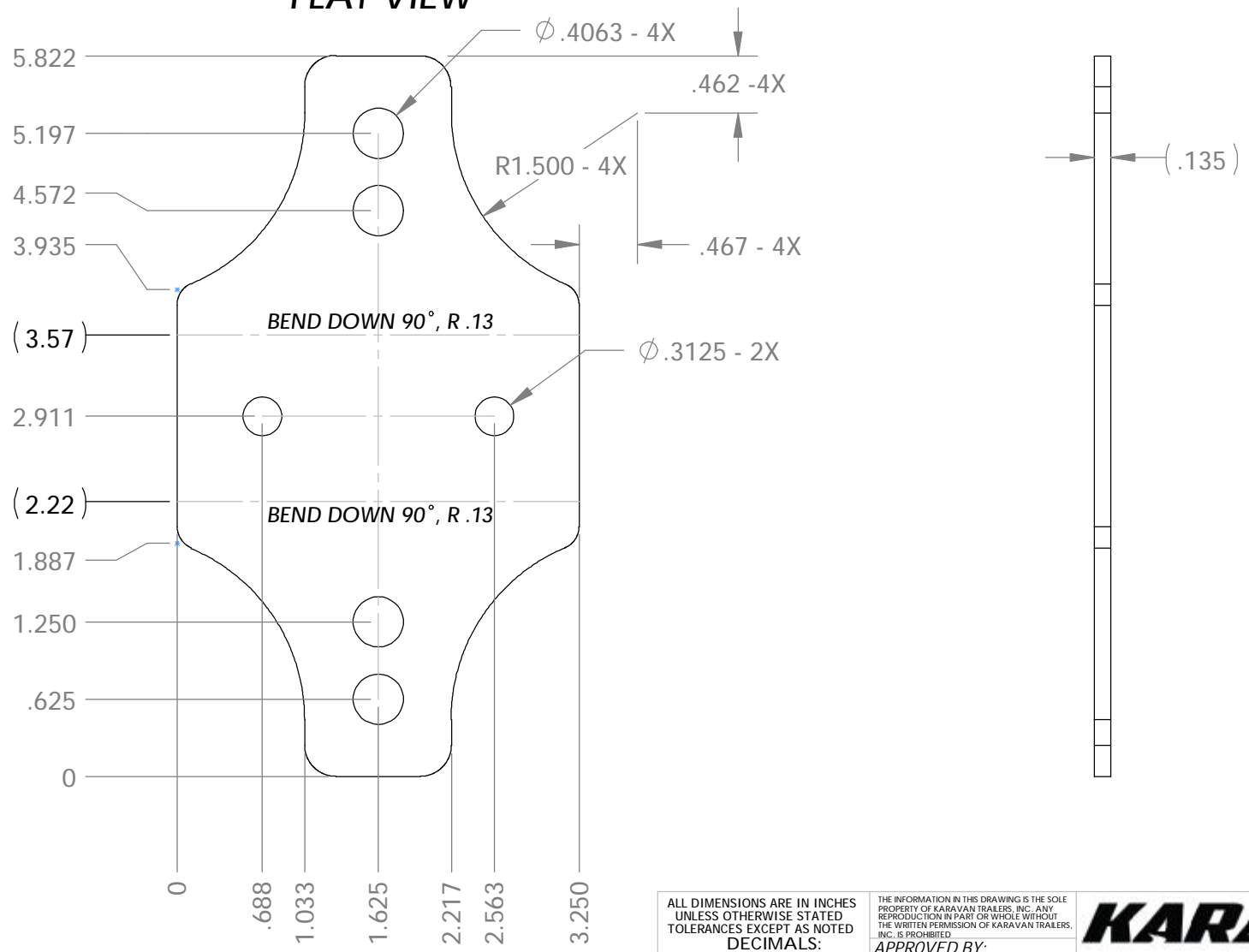
TITLE: BUNK BRACKET

MAT'L: 10GA. H.R.P.O.

FINISH: -ZN

DWG. #: 100-02306-D

FLAT VIEW



ALL DIMENSIONS ARE IN INCHES
UNLESS OTHERWISE STATED
TOLERANCES EXCEPT AS NOTED
DECIMALS:
.X ±0.100
.XX ±0.060
.XXX ±0.030
.XXXX ±0.010
ANGLES:
±1°
ALL FORMED ANGLES
EQUAL 90° UNLESS
NOTED OTHERWISE
() INDICATES REFERENCE

THE INFORMATION IN THIS DRAWING IS THE SOLE
PROPERTY OF KARAVAN TRAILERS, INC. ANY
REPRODUCTION IN PART OR WHOLE WITHOUT
THE WRITTEN PERMISSION OF KARAVAN TRAILERS,
INC. IS PROHIBITED.

APPROVED BY:

DRAWN BY:
JUSTIN D. SCHMIDT

DATE: 12-29-04

SHEET: 2 OF 2

SCALE: N/A

KARAVAN

TITLE: BUNK BRACKET

MAT'L: 10GA. H.R.P.O.

FINISH: -ZN

DWG. #: 100-02306-D

DWG. REV.	ECR/NDR NUMBER	REVISED BY	DATE	DESCRIPTION
D	15197	KMH	09-15-10	ADDED .238" TO OVERALL LENGTH & ADDED Ø.4063 HOLE -2X
C	13198	RLR	07-13-05	90° +1/-0 WAS +/-1

First Piece - In Process Inspection Sheet

Vendor _____

Description: **Bunk Bracket**

Part # **100-02306**

Rev. **D**

QA Approval: S. Mudra

JOB# _____

Characteristic	Tol.	Method	Freq.	1st Piece	A/R	2	A/R	3	A/R	4	A/R	5	A/R	6	A/R	7	A/R	Inspected By/Date:	
LASER																			
10 GA	.126 .142	Mic.	1st Piece																1 /
H.R.P.O.	NA	Visual	1st Piece																2 /
5.822	± .030	Caliper	1st Piece																3 /
3.250	± .030	Caliper	1st Piece																4 /
Ø.3125 - 2X	± .010	Caliper	1st Piece																5 /
Ø.4063 - 4X	± .010	Caliper	1st Piece																6 /
FORM																			
Match to checking fixture CF# 116	Visual	Checking fixture	Every piece																
1.594	± .030	Caliper	1:250																
2.331	± .030	Caliper	1:250																
90°	+1° -0°	Protractor	1:250																
R.125 - 2X	NA	Radius Gage	1st Piece																
Inspect parts for scratches, dents, gouges, etc.	NA	Visual	Every piece																
No slugs left in lasered holes.	NA	Visual	Every piece																