

FLAT VIEW

R.25 - 4X

UP 90° R.19

UP 90° R.19

UP 90° R.19

R.125 - 2X

UP 90° R.19

R.375 - 2X

0

.813

1.813

4.127

5.119

5.947

.750

1.250

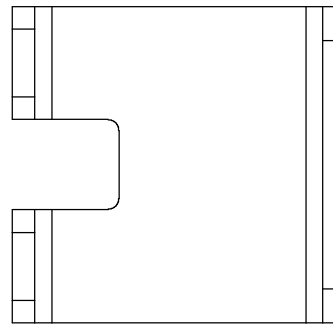
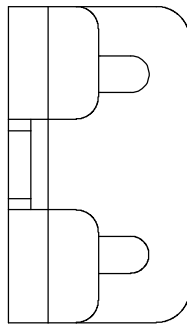
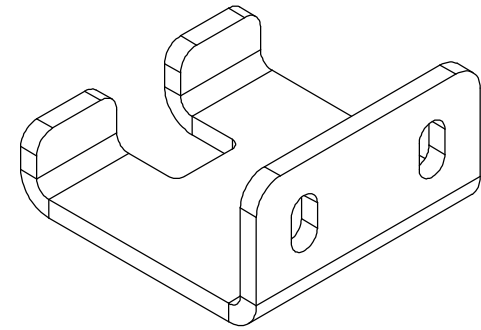
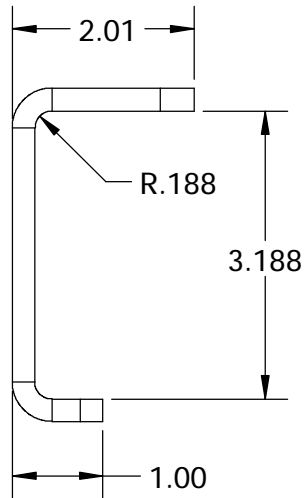
2.250

2.750

3.500

(.25)

B	15811	TVH	10-30-14	CHANGED 1.75 DIM TO 1.25
A	15473	JRN	02-27-12	DRAWING CREATED
DWG. REV.	ECR/NDR NUMBER	REVISED BY	DATE	DESCRIPTION



ALL DIMENSIONS ARE IN INCHES
UNLESS OTHERWISE STATED
TOLERANCES EXCEPT AS NOTED
DECIMALS:

.X ±0.100
.XX ±0.060
.XXX ±0.030
.XXXX ±0.010

ANGLES:
±1°

ALL FORMED ANGLES
EQUAL 90° UNLESS
NOTED OTHERWISE

() INDICATES REFERENCE

THE INFORMATION IN THIS DRAWING IS THE SOLE
PROPERTY OF KARAVAN TRAILERS, INC. ANY
REPRODUCTION IN PART OR WHOLE WITHOUT
THE WRITTEN PERMISSION OF KARAVAN TRAILERS,
INC. IS PROHIBITED.

APPROVED BY:

DRAWN BY:

JOEL NEHRING

DATE:

02-27-12

SHEET:

2 OF 2

SCALE:

N/A

KARAVAN

TITLE:

RAMP PIVOT BRACKET, LH/RH

MAT'L:

.25" H.R.P.O. SHEET

FINISH:

-BT

DWG. #:

100-04843-B

B	15811	TVH	10-30-14	CHANGED 1.75 DIM TO 1.25
A	15473	JRN	02-27-12	DRAWING CREATED
DWG. REV.	ECR/NDR NUMBER	REVISED BY	DATE	DESCRIPTION

First Piece - In Process Inspection Sheet

Description: **Ramp Pivot Bracket, LH/RH**

Part # **100-04843**

Rev. **B**

QA Approval: K. Hopf

JOB# _____

Characteristic	Tol.	Method	Freq.	1st Piece	A/R	2	A/R	3	A/R	4	A/R	5	A/R	6	A/R	Last Piece	A/R	Inspected By/Date:
LASER																		1 /
.25"	.242 - .258	Mic.	1st Piece															2 /
H.R.P.O.	NA	Visual	1st Piece															3 /
3.500	±.030	Caliper	1st Piece															4 /
5.947	±.030	Caliper	1st Piece															5 /
Ø.4063 X .7500 Slot - 2X	±.010	Caliper	1st Piece															6 /
FORM																		7 /
2.01	±.060	Caliper	1:50															
R.188	NA	Radius Gauge	1st Piece															
3.188	±.030	Caliper	1:50															
1.00	±.060	Caliper	1:50															
Inspect parts for scratches, dents, gouges, etc.	NA	Visual	Every piece															
No slugs left in lasered holes.	NA	Visual	Every piece															