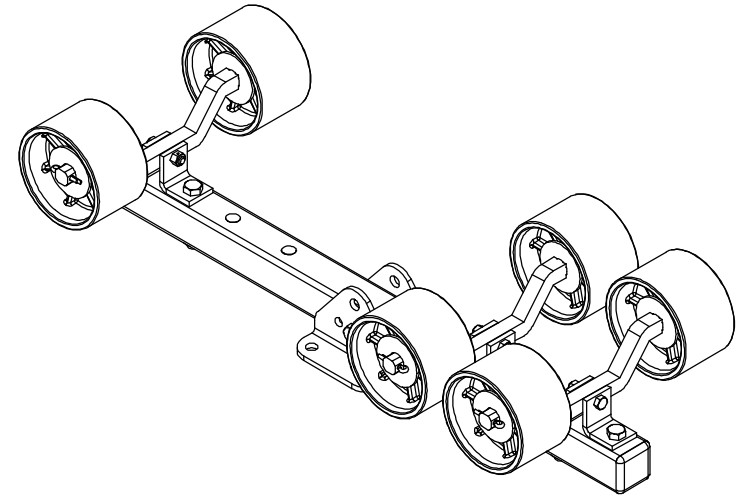
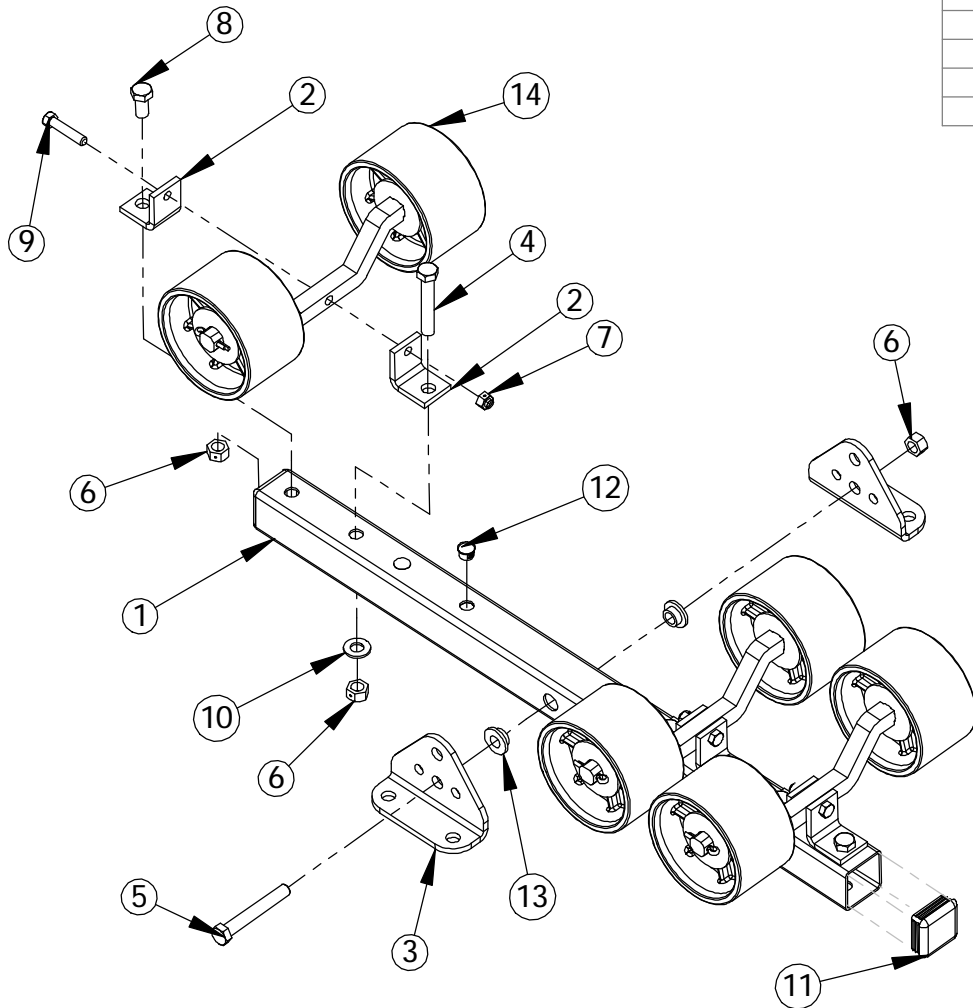


ITEM NO.	PART NUMBER	DESCRIPTION	QTY.
1	100-00034	ROLLER BEAM TUBE	1
2	100-00047	L- BRACKET	6
3	100-00994	ROLLER BEAM BRACKET	2
4	210-00012	.50"-13 X 3.00" HX HD BOLT	4
5	210-00013	.50"-13 X 3.50" HX HD BOLT	1
6	210-00061	.50"-13 CENTERLOCK HEX NUT	7
7	210-00076	.375"-16 CENTERLOCK HEX NUT	3
8	210-00133	.50"-13 X 1.00" HX HD BOLT	2
9	210-00178	.375"-16 X 1.75" HX HD BOLT	3
10	210-00240	.50" SAE FLAT WASHER ZINC	4
11	229-00026	END CAP	2
12	229-00028	PLUG	2
13	229-00229	NYLON WASHER	2
14	310-01505	ROLLER SUB-ASSEMBLY	3



ALL DIMENSIONS ARE IN INCHES
UNLESS OTHERWISE STATED
TOLERANCES EXCEPT AS NOTED
DECIMALS:

.X ±0.100
.XX ±0.060
.XXX ±0.030
.XXXX ±0.010

ANGLES:
±1°

ALL FORMED ANGLES
EQUAL 90° UNLESS
NOTED OTHERWISE

() INDICATES REFERENCE

THE INFORMATION IN THIS DRAWING IS THE SOLE
PROPERTY OF KARAVAN TRAILERS, INC. ANY
REPRODUCTION IN PART OR WHOLE WITHOUT
THE WRITTEN PERMISSION OF KARAVAN TRAILERS,
INC. IS PROHIBITED.

APPROVED BY:

C-RICHTER

DRAWN BY:

TINA MCCOY

DATE:

11-04-03

SHEET:

1 OF 1

SCALE:

N/A

KARAVAN

TITLE: ROLLER ASSEMBLY
W/BLUE ROLLERS

MAT'L: SEE
B.O.M.

FINISH: N/A

DWG. #: 310-01641-B

B/1	15313	LJW	04-19-11	UPDATED DRAWING
B	15036	KMH	03-17-11	210-00076 REPLACED 210-00048
DWG. REV.	ECR/NDR NUMBER	REVISED BY	DATE	DESCRIPTION