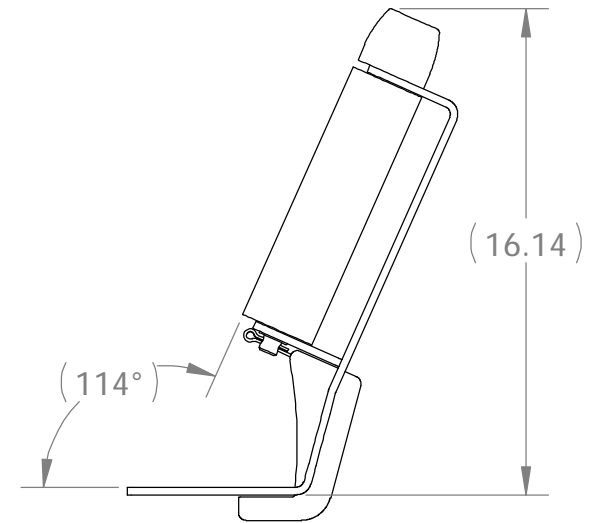
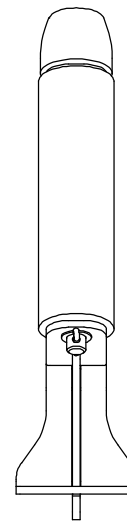
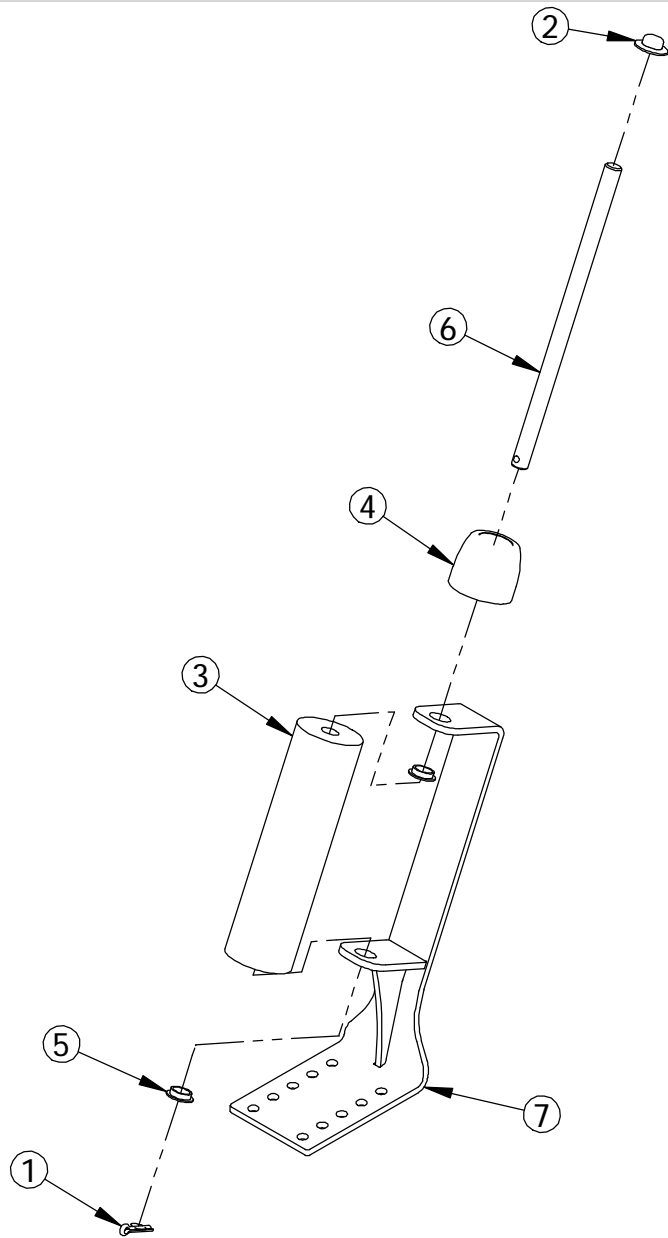


ITEM NO.	PART NUMBER	DESCRIPTION	QTY.
1	207-00043	COTTER PIN	1
2	210-00067	.625" PAL NUT	1
3	216-00002	FLAT ROLLER	1
4	216-00037	END CAP	1
5	229-00444	NYLON SHOULDER WASHER	2
6	229-00623	ROLLER AXLE	1
7	300-02992	GUIDE ON WELDMENT	1



ALL DIMENSIONS ARE IN INCHES  
UNLESS OTHERWISE STATED  
TOLERANCES EXCEPT AS NOTED  
DECIMALS:

.X ±0.100  
.XX ±0.060  
.XXX ±0.030  
.XXXX ±0.010

ANGLES:

±1°

ALL FORMED ANGLES  
EQUAL 90° UNLESS  
NOTED OTHERWISE

( ) INDICATES REFERENCE

THE INFORMATION IN THIS DRAWING IS THE SOLE  
PROPERTY OF KARAVAN TRAILERS, INC. ANY  
REPRODUCTION IN PART OR WHOLE WITHOUT  
THE WRITTEN PERMISSION OF KARAVAN TRAILERS,  
INC. IS PROHIBITED.

APPROVED BY:

---

DRAWN BY:

*DOWN CASTLE*

DATE:

08-08-13

SHEET:

1 OF 1

SCALE:

N/A

**KARAVAN**

TITLE:

GUIDE ON ASSEMBLY

MAT'L:

SEE B.O.M.

FINISH:

N/A

DWG. #:

**310-03278-B**

B	15846	NRZ	08-26-15	207-00043 REPLACED 210-00302, 229-00623 REPLACED 229-00397
A	15574	DLC	08-08-13	DRAWING CREATED
DWG. REV.	ECR/NDR NUMBER	REVISED BY	DATE	DESCRIPTION